



EZ Roll Grass Paver: Case Study

Fire Lane at Dell Customer Care Center

Fast Facts

Product

NDS EZ Roll Grass Paver 18,000 sq ft

Address

2501 N Blackwelder Ave,
Oklahoma City, TX

Application

Emergency Access Lane

Installation Date

July 2004



Above: Dell's Oklahoma City Campus with EZ Roll Grass Paver in 2009

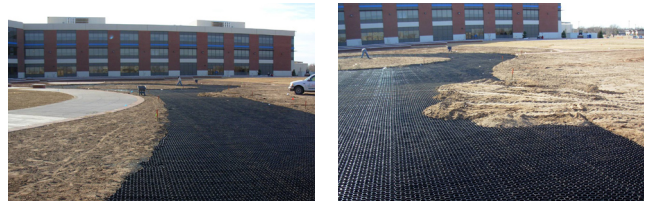
Fire Lane at Dell Customer Care Center

Project Information and Pictures from Installation

Dell, the world's largest computer maker, announced plans in July 2004 to open a Customer Care Center in Oklahoma City. While initial plans for the project were for a 250-person customer care center, the scope of the project changed quite drastically when Dell officials decided instead to build a high profile campus with a workforce of over 1,000 persons.

A facility of this size would require dual fire access roads, and EZ Roll Grass Paver was selected for its durability and ease of installation—with cross-links connecting the flexible rows of nested cells, the product ships in 600 sq ft rolls and can be rolled out on the jobsite. On a job of this size, such a product feature was key, and saved significant time during installation.

EZ Roll Grass Pavers are also manufactured from 100% recycled material, making them a fitting choice for Dell. Since the initial installation, Dell has committed to becoming the “greenest” technology company on the planet. Today, Dell powers the Oklahoma City Campus with 100% wind energy, and the grass on the fire lane access roads is green and thriving.



NDS Grass Paver is unrolled in long straight runs at the job site.



EZ Roll Paver will provide a stable surface for emergency vehicles as they approach the center.