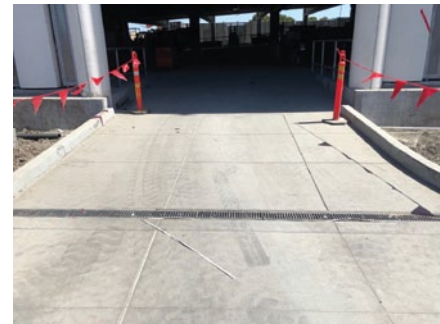




PROJECT SPOTLIGHTS

## Apple Parking Structure

Not far from their campus in Cupertino, California Apple has an office building in Menlo Park with its own dedicated parking structure. The design of the structure left the contractors with relatively light drainage needs but the high frequency of traffic meant that the entrance would need a solution rated for heavy vehicle loads. On a recommendation from their parts distributor, the contractors on the project chose Filcoten Trench Drains by NDS. Between the exceptional water flow capacity and long-lasting design durability, Filcoten is the perfect drainage system for virtually any vehicle-rated application.



For projects with an emphasis on durability, longevity, and vehicle load rating the best choice is NDS Filcoten. With channels composed of fiber-reinforced concrete and grates supporting up to Class E loads, Filcoten has a strong body with an engineered exterior that provides better cohesion to surrounding concrete for added stability. Aside from being durable, Filcoten also has exceptional water flow capacity that makes it ideal for commercial as well as heavy industrial applications. Contractors installed a small run of Filcoten at the entrance of the parking structure that is more than capable of handling their drainage needs for years to come.

Visit [ndspro.com](https://ndspro.com) for:



Videos



Tools/  
Calculators



Downloads



Case  
Studies



Request  
a Quote

**NDS Customer Service**

851 N. Harvard Ave., Lindsay, CA 93247  
Phone: 800.726.1994 · 559.562.9888  
Fax: 800.726.1998 · 559.562.4488