

The Best-in-Class Channel Drain Solution

Superior Performance, Versatility, and Ease of Installation

The Dura Slope Channel Drain is a durable alternative to concrete drains. Made from HDPE, the lightweight sections are designed for easier handling and installation, and engineered to maintain optimal flow rates.

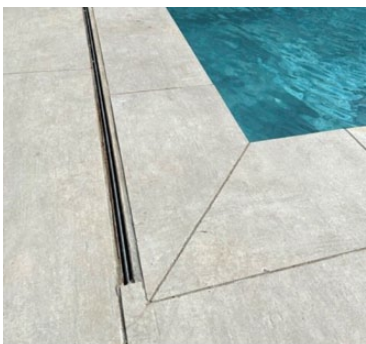
Applications

- Driveways
- Warehouses
- Wash-down areas
- Parking areas
- Loading docs
- Courtyards and pool decks



The Dura Slope Channel Drain system consists of 33 channel sections – 24 pre-sloped sections with 0.7% built-in slope and 9 neutral sections. Each section is 48 in. long X 6-5/8 in. wide. Invert depths range from 4.0 in. to 12.1 in., and body depths range from 5.8 in. to 13.5 in.

Dura Slope Channel Drain Projects



Slot tops showcase a low-profile aesthetic



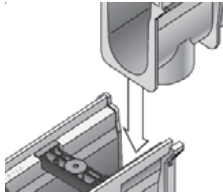
Durable system engineered for heavy loads



Grates available in a variety of materials and styles

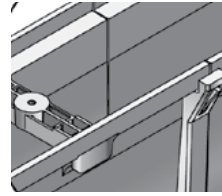


Modular parts save time on install



Interlocking tongue and groove joints

- Secures alignment
- Ensures straight channel runs
- Easy assembly and installation



DuraLoc™ integral joint lock

- Prevents joint movement during installation
- No extra clamps or screws needed

Variety of grate options

- Materials: plastic, galvanized steel, stainless steel, iron
- Styles: slots, perforated, slot tops, decorative
- Load Rated for NDS Class A, B, C, D
- Select grates are ADA compliant and heel-proof

Lightweight 4 ft. modular sections

- Easier handling and installation
- Lower freight costs

Blank grate insert

- Eliminates use of plywood
- Slides for overlapping of channel sections
- Includes grates screws

Smooth HDPE interior

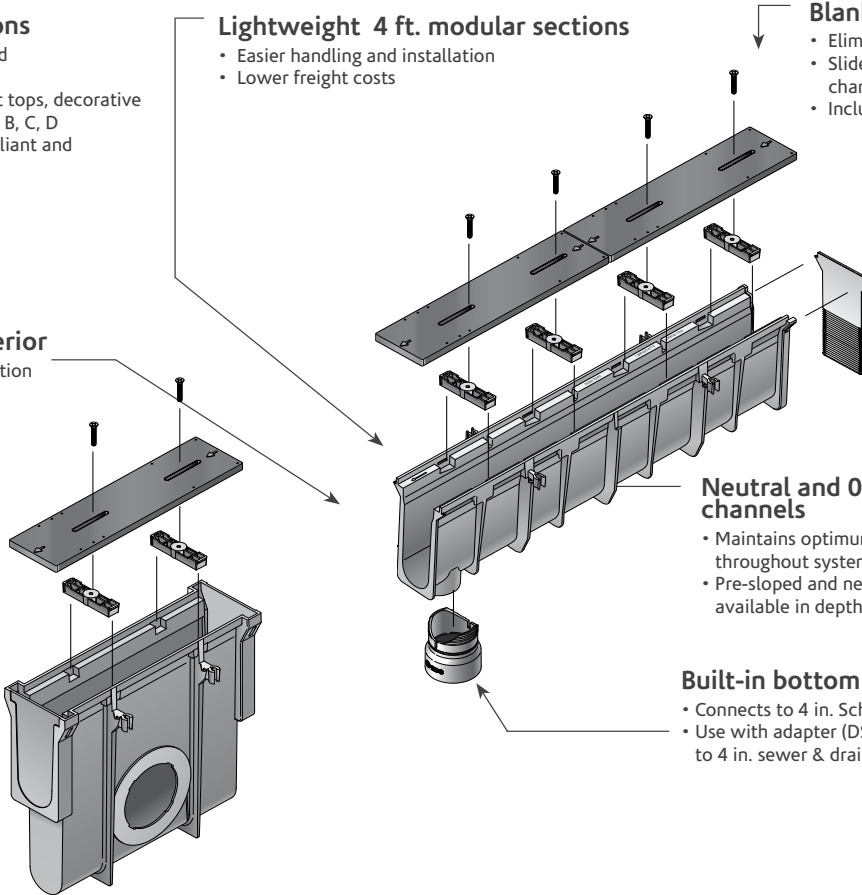
Virtually no water absorption

HDPE material

- Durable, with less breakage versus concrete
- Chemical resistant
- Contains UV inhibitors

Inline Catch Basin

- Captures debris that can clog the drain system
- Fits all depth ranges of the Dura Slope channel sections
- Outlets to connect to drain pipe

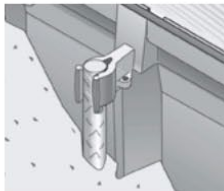


Neutral and 0.7% sloped channels

- Maintains optimum flow rates throughout system
- Pre-sloped and neutral channels available in depths from 4 in. to 12 in.

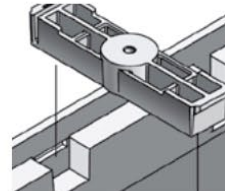
Built-in bottom outlet

- Connects to 4 in. Sch. 40 pipe
- Use with adapter (DS-126) to connect to 4 in. sewer & drain pipe



Leveloc™ rebar supports with integral protruding knob

- Levels channel
- Grips rebar



ProFit™ locking system

- Locks grate to integral frame
- Supports product in shipping and installation (included)

Scan to  Learn More

Dura Slope Drains



Grates & Accessories



Radius Couplings



How to Connect Channels

