

BG-FILCOTEN BY  **NDS**[®]
We put water in its place

High Performance Concrete Trench Drains for All Applications



ndspro.com



Videos



Tools/
Calculators



Downloads



Case
Studies



Design
Worx



Request
a Quote



A Heavyweight When It Comes to Features

BG-FILCOTEN by NDS® combines smart engineering and smart materials to provide a superior trench drain suitable for handling a high load capacity. Combining the features of a stable concrete channel with the strength, durability and environmental-friendliness of high performance concrete, BG-FILCOTEN by NDS® is the ideal choice for a wide variety of sites and applications.

Because BG-FILCOTEN by NDS® can handle a high load capacity, it is especially suitable for installation in industrial areas such as factories, garages and parking lots. With its sleek design it can easily be used in public places like railway stations, and pedestrian or residential areas.

High Performance Concrete is Stronger and Lighter than Traditional Concrete

Additional HPC Benefits:

- **Temperature, frost and UV resistant.** Less contraction and expansion and longer product life.
- **Product impact stability.** Less susceptible to cracking and breaking during transport and installation.
- **Non-flammable.** Manufactured without resins, FILCOTEN HPC is rated A1, non-combustible.
- **Monolithic adhesion.** Free from de-molding agents, FILCOTEN HPC bonds securely with the surrounding concrete.
- **100% recyclable, 0% harmful substances.** Sustainable solution without VOCs or heavy-metal residue.
- **Lower transport costs, swifter installation.** Depending on the type of channel, FILCOTEN HPC channels are up to 70% lighter than conventional concrete channels, reducing fuel consumption and aiding on site installation.

BG-FILCOTEN by NDS® Features

Superior strength and durability are just two of the features of BG-FILCOTEN by NDS® High Performance Concrete. The superior material combined with world-class craftsmanship results in a highly featured trench drain designed to perform at every-level.

Easy and attractive installation

thanks to the innovative production and molding technology which creates completely flat sides for flush installations against buildings.

More BG-FILCOTEN trench drain options

for longer, continuous runs.

Vertical outlets

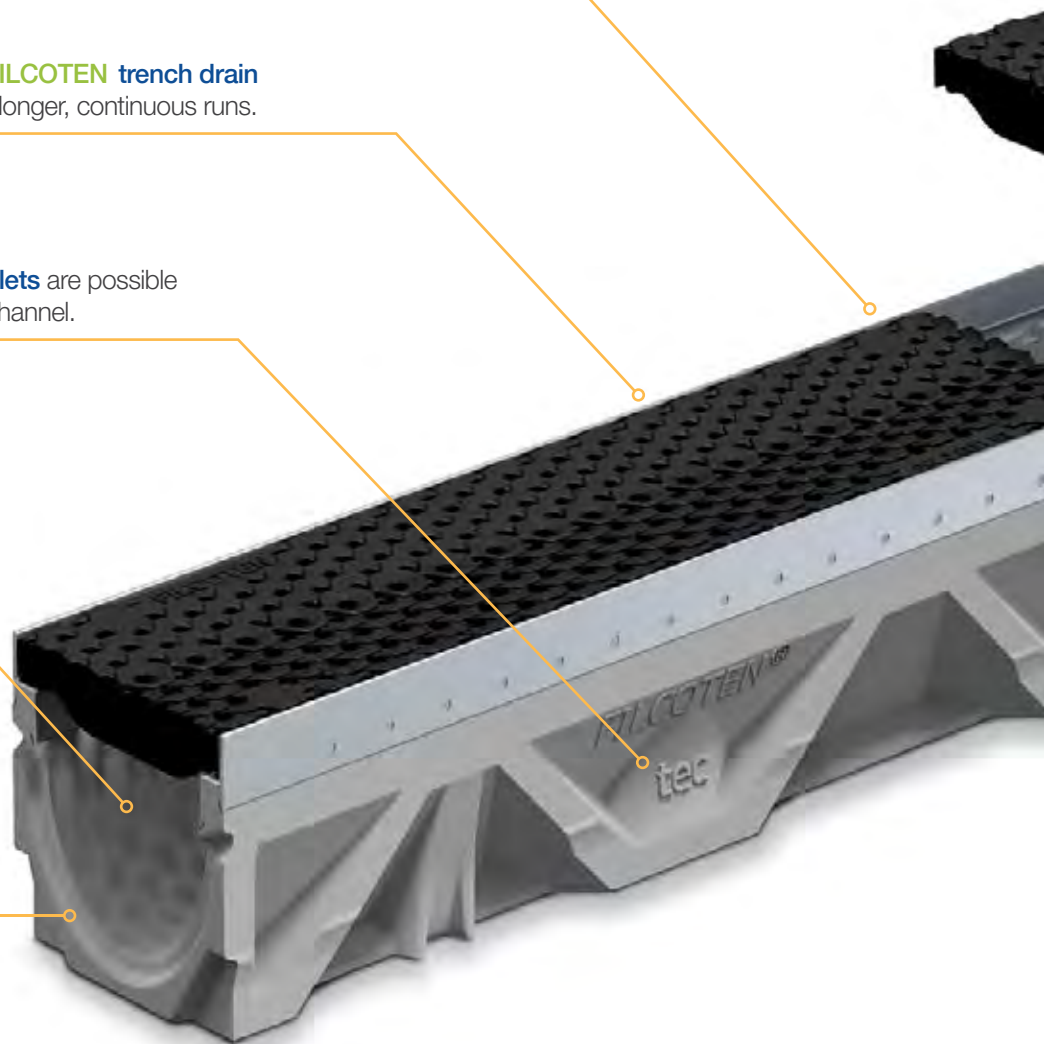
are possible with every channel.

Engineered smooth interior channel

creates the best possible flow characteristics and self-cleaning effect.

Waterproof installation

thanks to the sealant grooves.





Heel proof and ADA compliant

BG-FILCOTEN grates make sites accessible and enjoyable by everyone.



Anti-sliding lugs provide stability against longitudinal sliding.

Self-locking grate uses the quick release, secure fix-connection snap-on-anchoring system and steel rails.

Designed with security in mind, anti-vandal locking devices are available to ensure grates are only removed by authorized personnel. Four locking devices per channel section are recommended.

Designed with FEM analysis to ensure a strong and stable product.

Anchoring ribs both support the channel and increase the surface area to better adhere to the surrounding concrete.

BG-FILCOTEN by NDS® Applications

BG-FILCOTEN is the ideal choice for a wide variety of sites and applications.

Because BG-FILCOTEN by NDS® can handle a high load capacity, it is especially suitable for installation in industrial areas such as factories, garages and parking lots. Add BG-FILCOTEN decorative grate options to create a beautiful solution for high-profile areas where aesthetics are important.

BG-FILCOTEN is the ideal choice for:

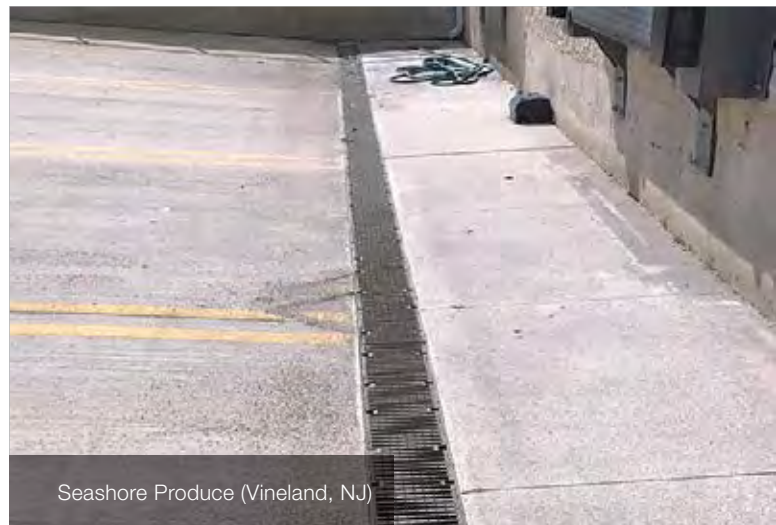
Parking
Airport & Ports
Landscaping

Roads/Transport
Government
Commercial

Residential
Sports facilities



Industrial (B.G.&E. MD)



Seashore Produce (Vineland, NJ)



Commercial Courtyard



Airport



Park



Roadway (US Gov. in VA)



Train Station



Parking Garage

BG-FILCOTEN by NDS® Grate Options

Decorative Grates

Beautiful designs preserve the aesthetic of public areas. BG-FILCOTEN by NDS® brings sleek good looks to public and hospitality spaces. Available in cast iron.

VILLE

Nominal width 100 / 200 / 300, class E600 kN per EN 1433



NW 100 (part# 17010180)



NW 200 (part# 17020180)



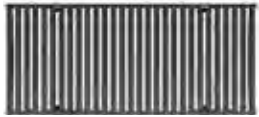
NW 300 (part# 17030180)

KIARO

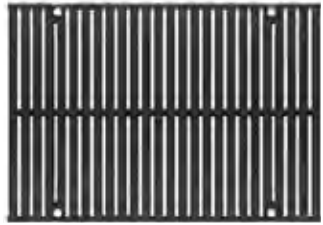
Nominal width 100 / 200 / 300, class D400 kN per EN 1433



NW 100 (part# 17010183)



NW 200 (part# 17020183)



NW 300 (part# 17030183)

VIA

Nominal width 100 / 200 / 300, class D400 kN per EN 1433



NW 100 (part# 17010184)



NW 200 (part# 17020184)



NW 300 (part# 17030184)

Decorative Composite Grate

Unique honeycomb and scaled surface design with central marking line ideal for modern applications. Available in both Class C and Class B.

COMBee

Nominal width 100, class B125 kN and C250 kN per EN 1433

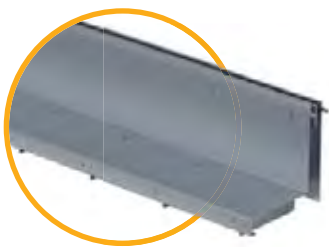


NW 100
(part# 17010401)

- 100% corrosion resistant
- Fully recyclable
- UV, frost and heat resistant

Slot Top Grate

When the design is as important as the function, BG-FILCOTEN by NDS® slot top grates are the first choice. With a slot width of 0.5", it blends in with any design aesthetic. The high load rating, and sleek maintenance unit make this grate option versatile enough to be used in many applications. Available in both galvanized steel and stainless steel.



Additional grate options available, including stainless steel and ductile iron in perforated, mesh and slotted designs. *See pages 12, 14 and 16.*

Made to Order Grates

RIVER

The flowing design of the RIVER grate offers a balance of playfulness and symmetry. Made from cast iron.



NW 100

Corten Steel

Corten Steel is crafted from a special steel that develops an attractive rust-colored protective patina when exposed to the elements. This patina provides a beautiful finish and rust-protection.



Corten Steel Ralley



Corten Steel Route



Corten Steel Linear

Trench Drains

NDS offers trench and channel drains perfectly fitted to your desired grate. Choose the drain size you need and simply match it to the grate of your choice.

- Made from FILCOTEN HPC High Performance Concrete
- Offered in a variety of sizes and runs
- Theft-proof - Anti-vandal locking devices available
- Anchoring ribs - support the channel and increase the surface area to better adhere to the surrounding concrete
- Now, more trench drain options for longer continuous runs.



Tec V and E 100 (4")



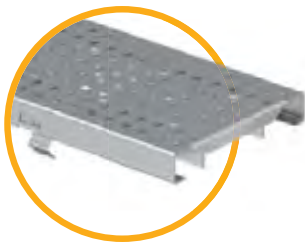
Pro V 200 (8") and Pro V 300 (12")



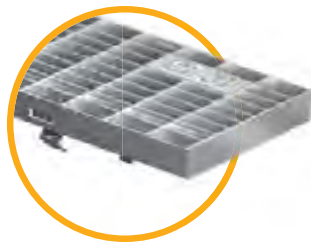
4" Trench Drains

BG-FILCOTEN Tec V 100 by NDS® trench drain system is available with galvanized or stainless steel rails in pre-sloped and neutral sections and is resilient up to Class E600 (in accordance to DIN 19580).

Available Grates



Perforated
Galvanized Steel



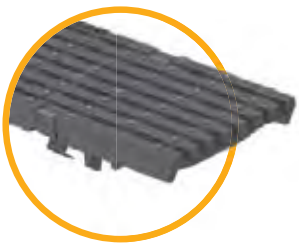
Mesh
Galvanized Steel



Slotted
Galvanized Steel



Combee Composite
Honeycomb



Longitudinal Bar
Ductile Iron



Slotted
Ductile Iron



VILLE
Cast Iron



KIARO
Cast Iron



VIA
Cast Iron

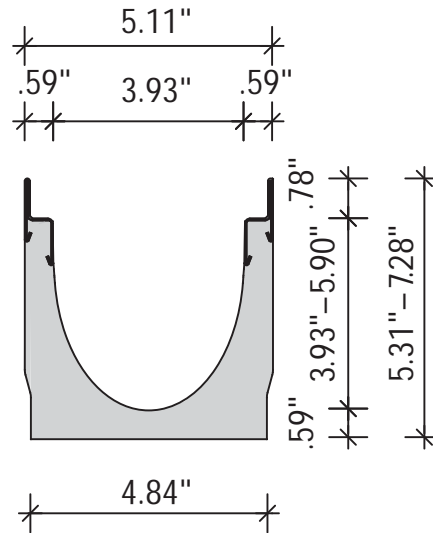


Slot Top
Stainless Steel /
Galvanized Steel



Available Channel Drains

All 4" grates can be paired with any of our 4" channel drains.



Tec V 100

Galvanized Steel

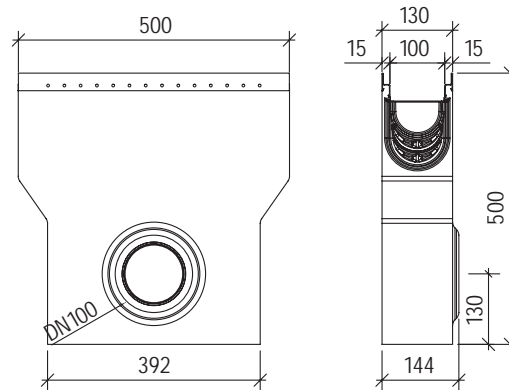
Available channels: 0-20

Tec E 100

Stainless Steel

Available channels: 0-20

Tec V 100 Accessories



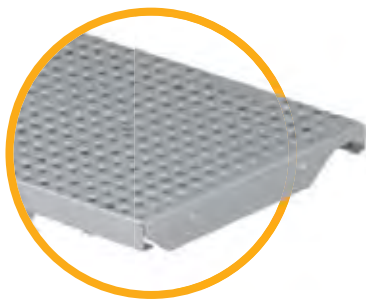
Tec V 100 Sump Unit

(part# 10410292)

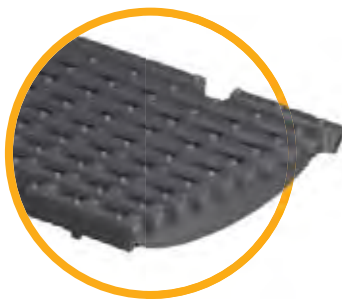
8" Trench Drains

With BG-FILCOTEN Pro V 200 by NDS® you don't have to compromise on quality or durability. It's stable, yet lightweight and can be adopted to site conditions. BG-FILCOTEN Pro V 200 is available with galvanized rails in neutral and sloped sections and up to load class E 600 (according to EN 1433).

Available Grates



Perforated
Galvanized Steel



Longitudinal Bar
Ductile Iron



Slotted
Ductile Iron



VILLE*
Cast Iron



KIARO*
Cast Iron



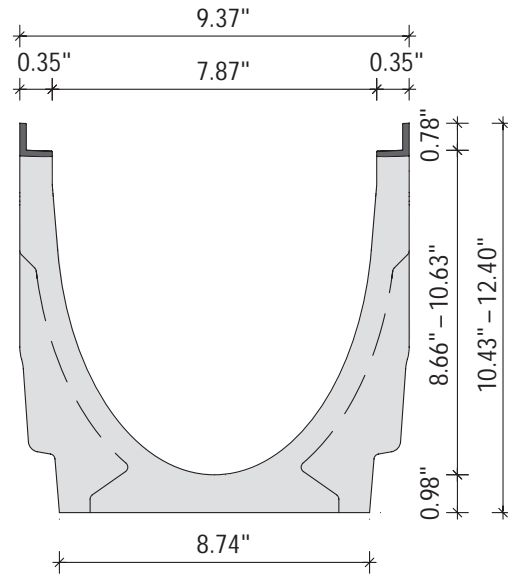
VIA*
Cast Iron



*Please see page 8 to view this style for an 8" trench drain.

Available Channel Drains

All 8" grates can be paired with any of our 8" channel drains.

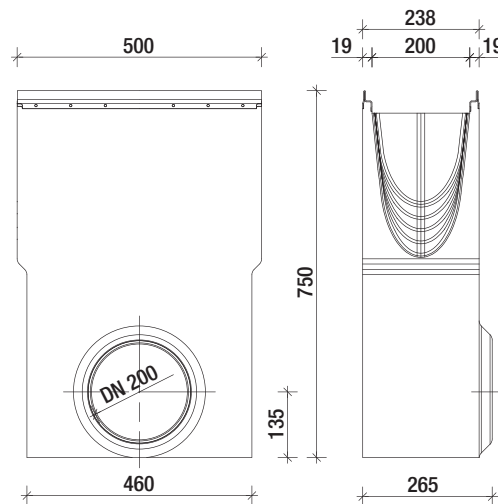


Pro V 200

Galvanized Steel

Available channels: 0-20

Pro V 200 Accessories



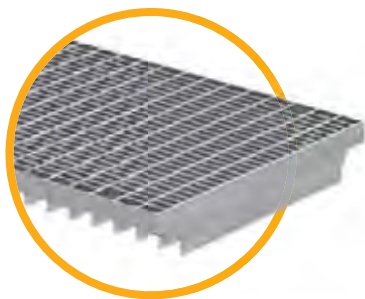
Pro V 200 Sump Unit

(part# 22512)

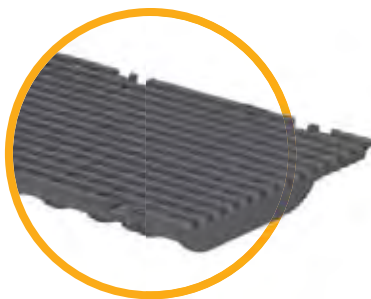
12" Trench Drains

BG-FILCOTEN Pro V 300 by NDS® is ideal for large capacity water management. Available with a galvanized rail in both pre-sloped and neutral sections and up to load class E 600 (according to EN 1433).

Available Grates



Mesh
Galvanized Steel



Boltmax
Ductile Iron



VILLE*
Cast Iron



KIARO*
Cast Iron



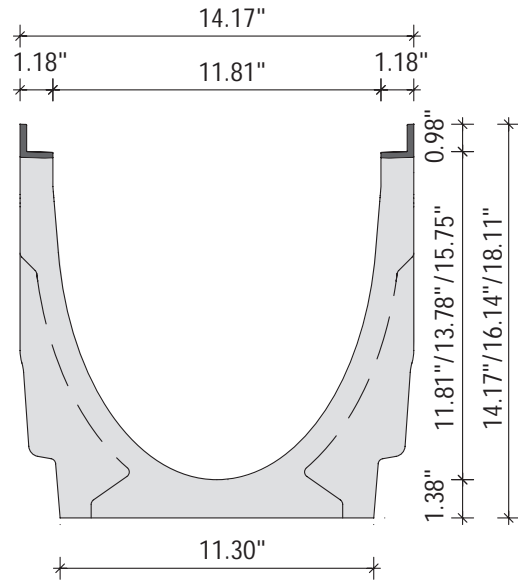
VIA*
Cast Iron



*Please see page 8 to view this style for an 12" trench drain.

Available Channel Drains

All 12" grates can be paired with any of our 12" channel drains.

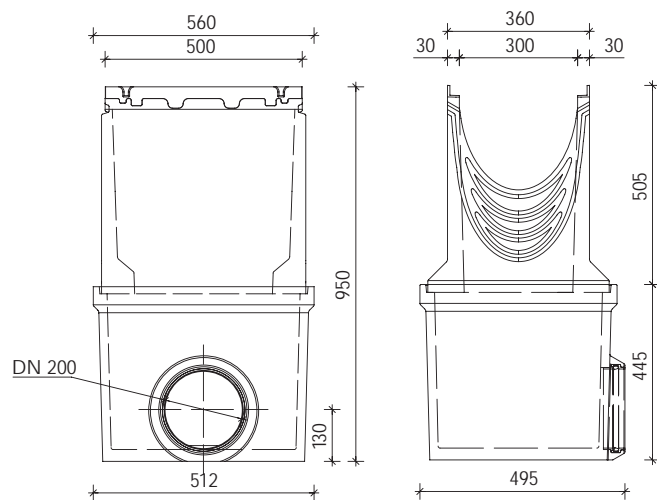


Pro V 300

Galvanized Steel

Available channels: 0-20

Pro V 300 Accessories



Pro V 300 Sump Unit

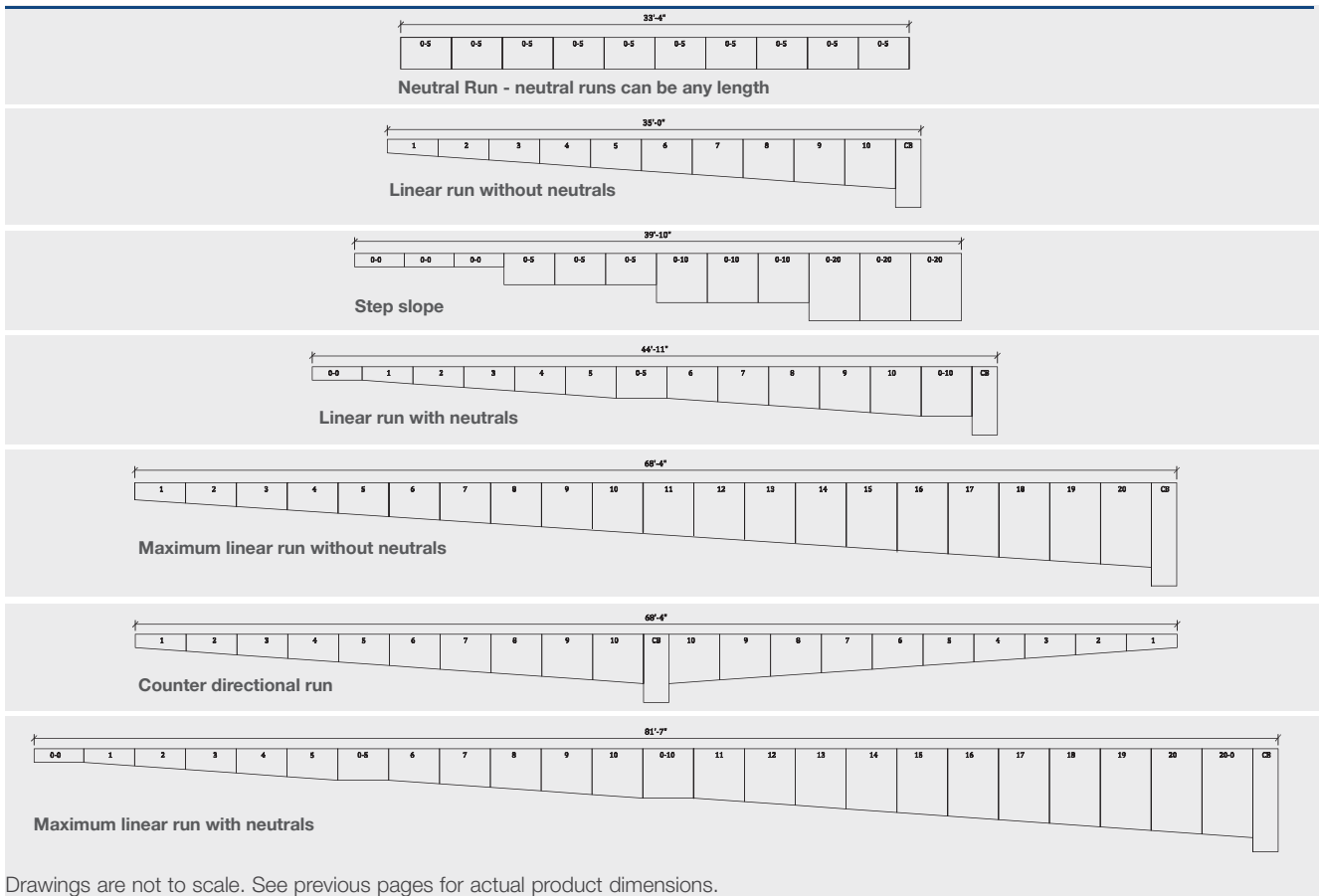
(part# 22213)



BG-FILCOTEN by NDS®

Example Run Lengths

Examples below illustrate potential run lengths using various combinations of sloped and neutral channels and catch basins.



Drawings are not to scale. See previous pages for actual product dimensions.

The maximum run length using only sloped channels with a catch basin in the middle is 135'. The maximum run length with all slopes with 1 each of the neutrals and a catch basin in the middle would be 162'.

Accessories



Catch Basin



Anti-Vandal
Locking Device



Rebar Support Clips



Closed/End Cap



End Cap with Outlet



Bottom Outlet

NDS® offers a full line of channel and trench drains suitable for any project:



Micro Light Residential
Load rating A



Slim Channel Residential
Load rating A



Mini Light Residential
Load rated up to B



Spee-D®
Light Residential
Load rated up to B



Pro Series Residential
& Light Commercial
Load rated up to C



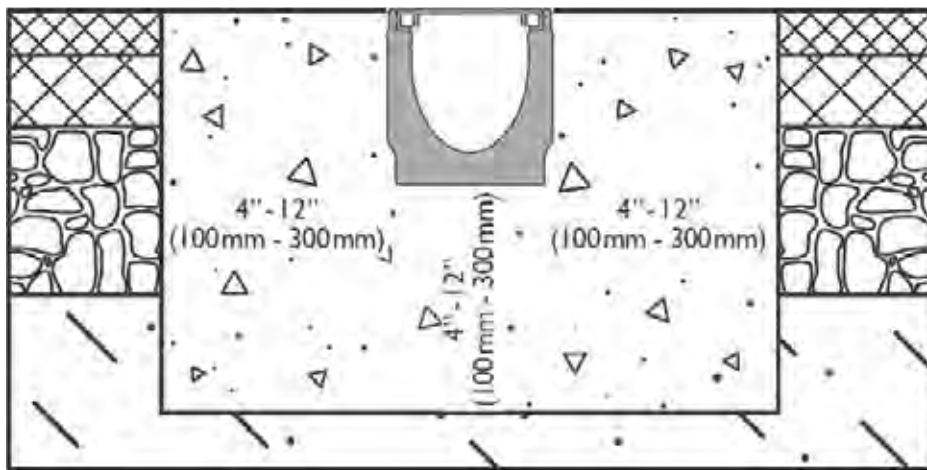
Dura Slope™ Residential
& Light Commercial
Load rated up to D

Installation Examples

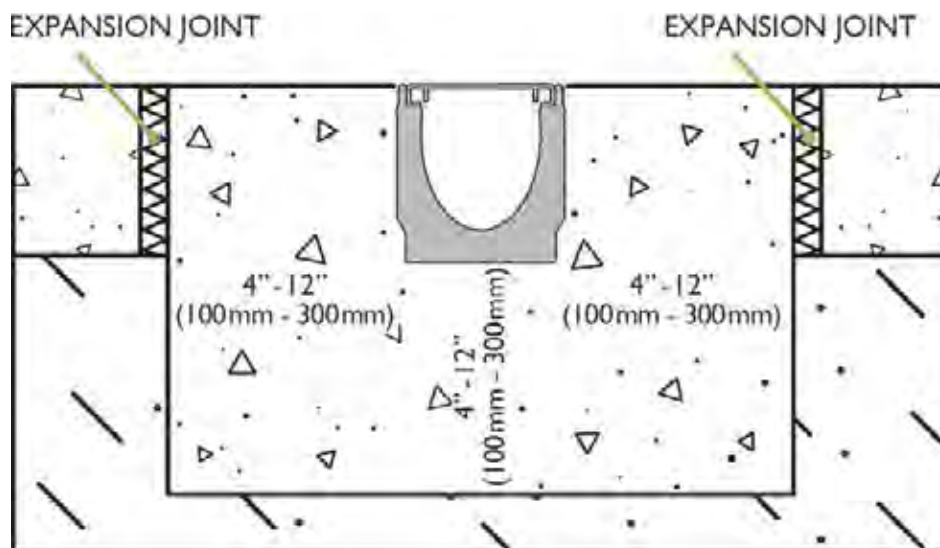
These examples are only a guide to typical installations. The consultation of an engineer will be needed to determine if the site conditions need additional reinforcement.

- Grates should be chosen based on the type which will best fit the channel type and size
- The compressive strength of the cement concrete surrounding the installation should be a minimum grade of 4,000psi

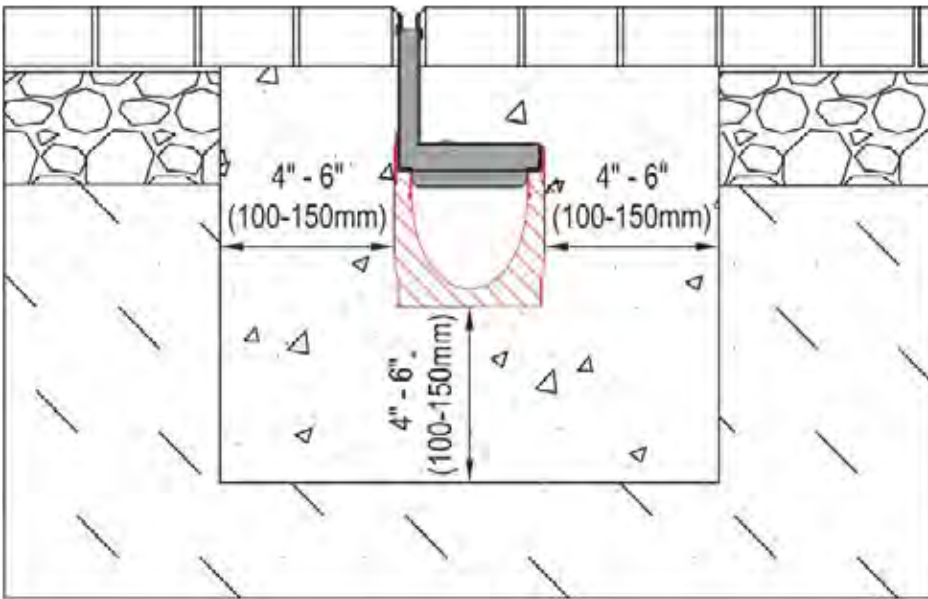
Asphalt Pavement - load class A-F



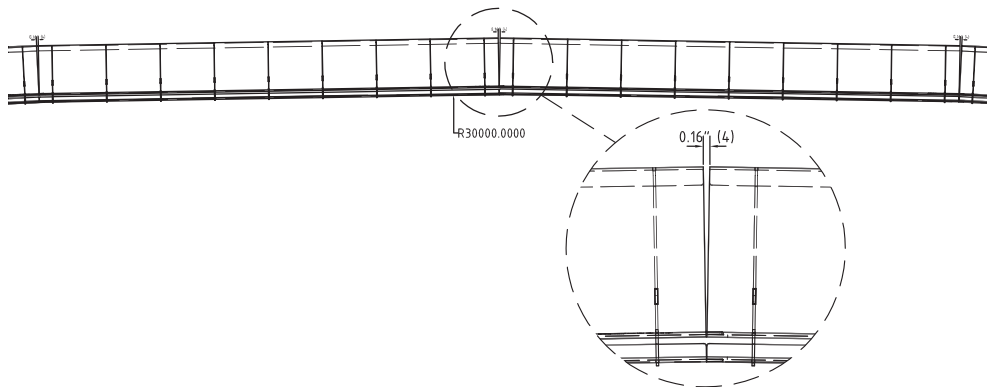
Concrete Pavement - load class A-F



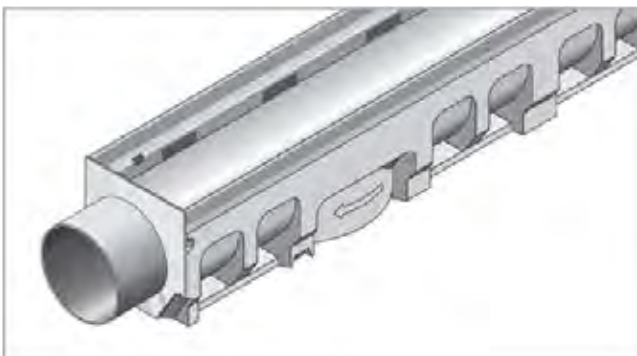
Slot Top in Paver Pavement with Hidden Concrete Installation – load class A-C



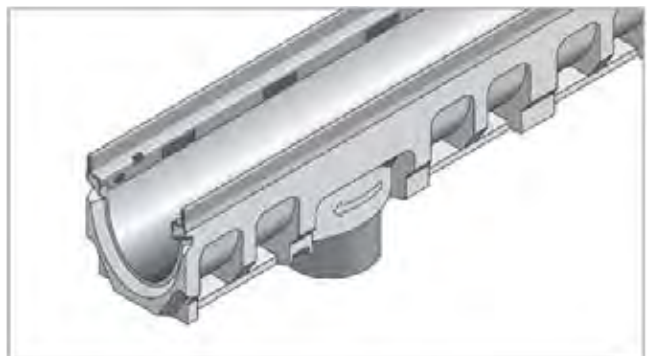
Radius Installations and Potential Minimum Arc for Slot Top



Outlet Types



End cap horizontal outlet

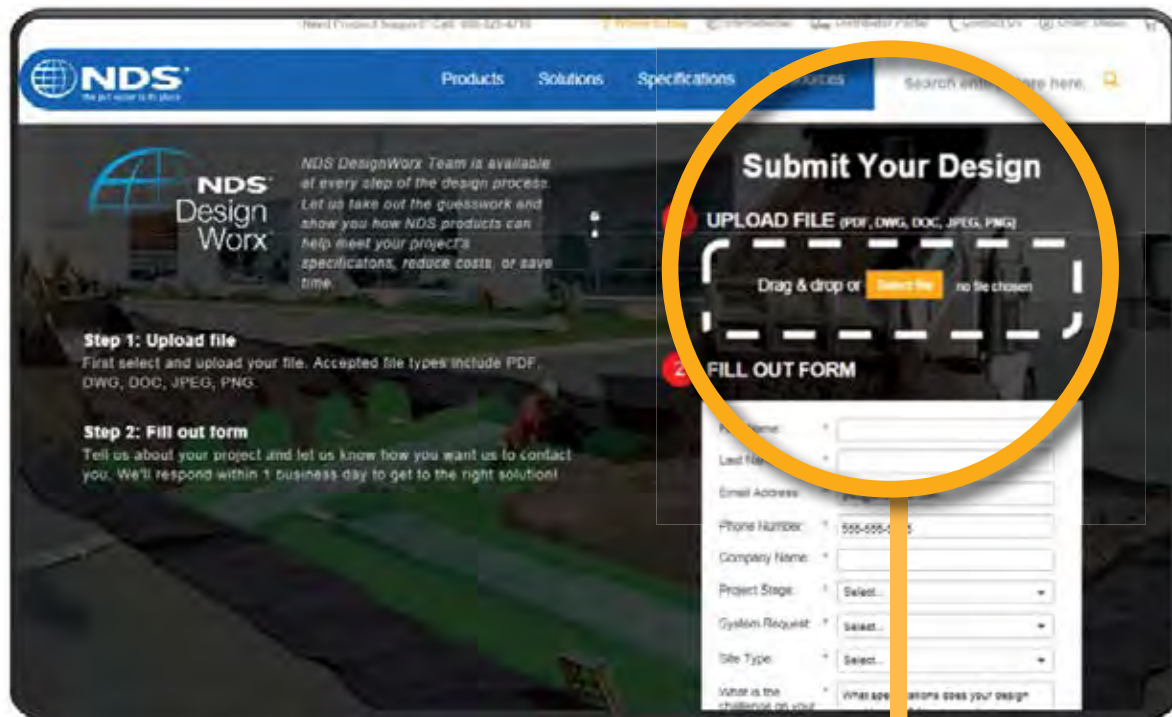


Bottom outlet

With NDS DesignWorx™ We Can Draft Your Plan.

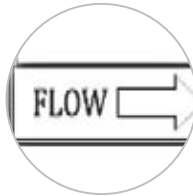
NDS civil engineers and expert technicians are ready to partner with you to make your project successful. Our team will work with you to assess the feasibility of incorporating NDS products to align with best stormwater practices and save costs.

We will evaluate your plans & help in preparation of submittal drawings, including:

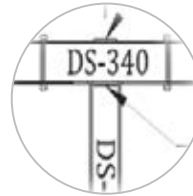


Just Upload CAD or PDF Thru Website:
NDSpro.com/submityourdesign

! Find Us on CAD Details:
CADDETAILS.COM



Direction of flow detail

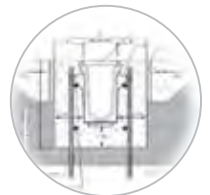
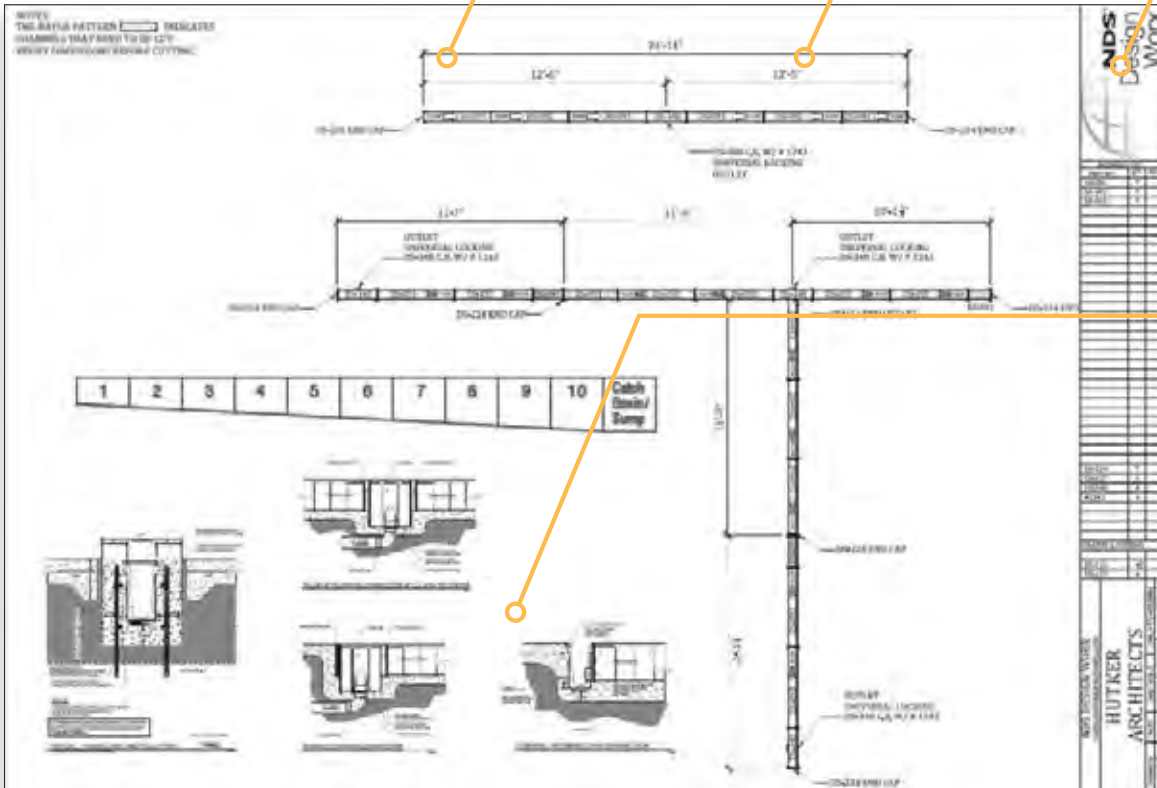


Identify all parts



MATERIALS LIST		
PART NO.	QTY.	REC.
091	7	
2	7	

List of all materials

















Installation details

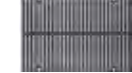


Your company on title block

Appendix

Grates

	PRODUCT NAME	PART NUMBER	SIZE	SLOT WIDTH	LOAD CL DIN	INLET CROSS SECTION/ METER	WEIGHT	ADA	HEEL PROOF
	NDS-FILCOTEN 4 INCH DUCTILE IRON SLOTTED GRATE	17010105	4.8 x 19.7" 122 x 500 mm	0.55" x 7.871" 14 x 200 mm	E 600 kN	11.58 inch ² /m 965 cm ² /m ²	18.96 lbs 8.6 kg	NO	NO
	NDS-FILCOTEN 4 INCH DUCTILE IRON GRATE	17010106	4.8 x 19.7" 122 x 500 mm	1.14 x .24" 29 X 6 mm	C 250 kN	49.6 inch ² /m 320 cm ² /m	7.94 lbs 3.6 kg	YES	YES
	NDS-FILCOTEN 4 INCH DUCTILE IRON GRATE	17010110	4.8 x 19.7" 122 x 500 mm	1.1 x .35" 29 X 6 mm	D 400 kN	73.63 inch ² /m 475 cm ² /m	7.5 lbs 3.4 kg	YES	NO
	NDS-FILCOTEN 4 INCH "VILLE" DUCTILE IRON GRATE	17010180	4.8 x 19.7" 122 x 500 mm	0.31" 8 mm	E 600 kN	24.8 inch ² /m 160 cm ² /m ²	11.46 lbs 5.2 kg	YES	YES
	NDS-FILCOTEN 4 INCH "RIVER" DUCTILE IRON GRATE	MT0 1701018X	4.8 x 19.7" 122 x 500 mm	0.31" 8 mm	D 400 kN	xx Sq.inches/m xx cm ² /m	xx lbs kg	YES	YES
	NDS-FILCOTEN 4 INCH "VIA" DUCTILE IRON GRATE	17010184	4.8 x 19.7" 122 x 500 mm	0.23" 6 mm	D 400 kN	60.5 inch ² /m 390 cm ² /m	9.48 lbs 4.3 kg	YES	YES
	NDS-FILCOTEN 4 INCH "KIARO" DUCTILE IRON GRATE	17010183	4.8 x 19.7" 122 x 500 mm	0.22 inch 5.7 mm	D 400 kN	65 inch ² /m 425 cm ² /m	9.48 lbs 4.3 kg	YES	YES
	NDS-FILCOTEN 4 INCH SLOTTED GALVANIZED	17010202	4.8 x 39.4" 122 x 1000 mm	0.31 x 3.15" 8 X 80 mm	A 15 kN	34.88 inch ² /m 225 cm ² /m	3.31 lbs 1.5 kg	NO	NO
	NDS-FILCOTEN 4 INCH SLOTTED GALVANIZED	17010203	4.8 x 19.7" 122 x 500 mm	0.31 x 3.15" 8 X 80 mm	A 15 kN	34.88 inch ² /m 225 cm ² /m	1.76 lbs .80 kg	NO	NO
	NDS-FILCOTEN 4 INCH SLOTTED GALVANIZED	17010206	4.8 x 39.4" 122 x 1000 mm	0.31 x 3.15" 8 X 80 mm	C 250 kN	42.63.88 inch ² /m 275 cm ² /m	9.92 lbs 4.5 kg	NO	NO
	NDS-FILCOTEN 4 INCH SLOTTED GALVANIZED	17010207	4.8 x 19.7" 122 x 500 mm	0.31 x 3.15" 8 X 80 mm	C 250 kN	42.63.88 inch ² /m 275 cm ² /m	4.85 lbs 2.2 kg	NO	NO
	NDS-FILCOTEN 4 INCH PERFORATED GALVANIZED	17010204	4.8 x 39.4" 122 x 1000 mm	0.25" 6 mm	A 15 kN	20.77 inch ² /m 134 cm ² /m	4.19 lbs 1.9 kg	YES	YES
	NDS-FILCOTEN 4 INCH PERFORATED GALVANIZED	17010205	4.8 x 19.7" 122 x 500 mm	0.25" 6 mm	A 15 kN	20.77 inch ² /m 134 cm ² /m	2.2 lbs 1.0 kg	YES	YES
	NDS-FILCOTEN 4 INCH PERFORATED GALVANIZED	17010228	4.8 x 39.4" 122 x 1000 mm	0.25" 6 mm	C 250 kN	20.77 inch ² /m 134 cm ² /m	4.19 lbs 1.9 kg	YES	YES
	NDS-FILCOTEN 4 INCH PERFORATED GALVANIZED	17010229	4.8 x 19.7" 122 x 500 mm	0.25" 6 mm	C 250 kN	20.77 inch ² /m 134 cm ² /m	2.2 lbs 1.0 kg	YES	YES
	NDS-FILCOTEN 4 INCH GALVANIZED MESH	17010220	4.8 x 39.4" 122 x 1000 mm	0.39 x 1.18" 30 X 10 mm	B 125 kN	151.9 inch ² /m 980 cm ² /m	6.17 lbs 2.8 kg	YES	NO
	NDS-FILCOTEN 4 INCH GALVANIZED MESH	17010221	4.8 x 19.7" 122 x 500 mm	0.39 x 1.18" 30 X 10 mm	B 125 kN	147.25 inch ² /m 950 cm ² /m	3.09 lbs 1.4 kg	YES	NO



PRODUCT NAME	PART NUMBER	SIZE	SLOT WIDTH	LOAD CL DIN	INLET CROSS SECTION/ METER	WEIGHT	ADA	HEEL PROOF
NDS-FILCOTEN 4 INCH "COMBee" POLYAMIDE BLACK GRATE	17010401	4.8 x 19.7" 122 x 500 mm	0.28" 7.2 mm	B 125 kN	44.95 inch ² /m 290 cm ² /m	2.43 lbs 1.1 kg	YES	YES
NDS-FILCOTEN 4 INCH "COMBee" POLYAMIDE BLACK GRATE	17010402	4.8 x 19.7" 122 x 500 mm	0.31" 8 mm	C 250 kN	44.95 inch ² /m 290 cm ² /m	2.43 lbs 1.1 kg	YES	YES
NDS-FILCOTEN 4 INCH PAVER SLOT TOP, GALV. STEEL	17111204	4 x 39.4" 100 x 1000 mm	0.25" 6.5 mm	C 250 kN	19.37 inch ² /m 125 cm ² /m	11.9 lbs 5.4 kg	YES	YES
NDS-FILCOTEN 4 INCH PAVER SLOT TOP, GALV. STEEL	17111205	4 x 19.7" 100 x 500 mm	0.25" 6.5 mm	C 250 kN	19.37 inch ² /m 125 cm ² /m	5.95 lbs 2.7 kg	YES	YES
NDS-FILCOTEN 4 INCH PAVER SLOT TOP, MAINT. UNIT, STAINLESS STEEL	17111206	4 x 19.7" 100 x 500 mm	0.25" 6.5 mm	C 250 kN	19.37 inch ² /m 125 cm ² /m	11.02 lbs 5 kg	YES	YES
NDS-FILCOTEN 4 INCH PAVER SLOT TOP, STAINLESS STEEL	17111304	4 x 39.4" 100 x 1000 mm	0.25" 6.5 mm	C 250 kN	19.37 inch ² /m 125 cm ² /m	11.9 lbs 5.4 kg	YES	YES
NDS-FILCOTEN 4 INCH PAVER SLOT TOP, STAINLESS STEEL	17111305	4 x 19.7" 100 x 500 mm	0.25" 6.5 mm	C 250 kN	19.37 inch ² /m 125 cm ² /m	5.95 lbs 2.7 kg	YES	YES
NDS-FILCOTEN 4 INCH PAVER SLOT TOP, Maint. Unit, STAINLESS STEEL	17111306	4 x 19.7" 100 x 500 mm	0.25" 6.5 mm	C 250 kN	19.37 inch ² /m 125 cm ² /m	11.02 lbs 5 kg	YES	YES
NDS-FILCOTEN 8 INCH DUCTILE IRON GRATE	17020105	8.7 x 19.7" 222 x 500 mm	0.55 x 7.871" 14 x 200 mm	E 600 kN	110.58 inch ² /m 965 cm ² /m	18.96 lbs 8.6 kg	NO	NO
NDS-FILCOTEN 8 INCH DUCTILE IRON GRATE	17020104	8.7 x 19.7" 222 x 500 mm	1.14 x 0.51" 29 x 13 mm	D 400 kN	145.7 inch ² /m 940 cm ² /m	7.5 lbs 3.6 kg	NO	NO
NDS-FILCOTEN 8 INCH "VILLE" DUCTILE IRON GRATE	17020180	8.7 x 19.7" 222 x 500 mm	0.31" 8 mm	E 600 kN	"45.7 Sq.inches/m 295 cm ² /m	23.59 lbs 10.7 kg	YES	YES
NDS-FILCOTEN 8 INCH "VIA" DUCTILE IRON GRATE	17020184	8.7 x 19.7" 222 x 500 mm	0.23" 6 mm	D 400 kN	98 inch ² /m 625 cm ² /m	18.52 lbs 8.4 kg	YES	YES
NDS-FILCOTEN 8 INCH "KIARO" DUCTILE IRON GRATE	17020183	8.7 x 19.7" 222 x 500 mm	0.22" 5.7 mm	D 400 kN	120.1 inch ² /m 775 cm ² /m	20.72 lbs 9.4 kg	YES	YES
NDS-FILCOTEN 8 INCH PERFORATED GALV GRATE	17020228	8.7 x 39.4" 222 x 1000 mm	0.25" 6 mm	C 250 kN	26.35 inch ² /m 170 cm ² /m	29.76 lbs 13.5 kg	YES	YES
NDS-FILCOTEN 8 INCH PERFORATED GALV GRATE	17020229	8.7 x 19.7" 222 x 500 mm	0.25" 6 mm	C 250 kN	26.35 inch ² /m 170 cm ² /m	14.77 lbs 6.7 kg	YES	YES
NDS-FILCOTEN 12 INCH DUCTILE IRON GRATE	17030103	12.6 x 19.7" 320 x 500 mm	1.14 x 0.51" 29x13mm	E 600 kN	227 Sq.inches/m 1,465 cm ² /m	39.46 lbs 17.9 kg	NO	NO
NDS-FILCOTEN 12 INCH "VIA" DUCTILE IRON GRATE	17030184	12.6 x 19.7" 320 x 500 mm	0.23" 6 mm	D 400 kN	153 Sq.inches/m 990 cm ² /m	38.58 lbs 17.5 kg	YES	YES
NDS-FILCOTEN 12 INCH "VILLE" DUCTILE IRON GRATE	17030180	12.6 x 19.7" 320 x 500 mm	0.31" 8 mm	E 600 kN	82.2 Sq.inches/m 530 cm ² /m	43.87 19.9 kg	YES	YES
NDS-FILCOTEN 12 INCH "KIARO" DUCTILE IRON GRATE	17030183	12.6 x 19.7" 320 x 500 mm	0.22" 5.7 mm	D 400 kN	167.4 Sq.inches/m 1,080 cm ² /m	44.09 lbs 20.0 kg	YES	YES
NDS-FILCOTEN 8 INCH GALVANIZED STEEL MESH GRATE	17030222	12.6 x 19.7" 320 x 1000 mm	0.39 x 1.18" 10 X 30 mm	C 250 kN	26.35 inch ² /m 170 cm ² /m	29.76 lbs 13.5 kg	YES	NO
NDS-FILCOTEN 8 INCH GALVANIZED STEEL MESH GRATE	17030223	12.6 x 19.7" 320 x 500 mm	0.39 x 1.18" 10 X 30 mm	C 250 kN	26.35 inch ² /m 170 cm ² /m	14.77 lbs 6.7 kg	YES	NO

Channels and Trenches



Product	Part Number	Series	Depth	Slope	Overall body inches		Invert Inches		Maximum flow rate			Weight (less grate)	
					Min Depth	Max Depth	Min	Max	GPM	LPS	CFS	Lbs	Kg
FILCOTEN 4" (Tech E 100) STAINLESS STEEL RAIL CHANNEL 0	10410300	100	0	0%	5.31	5.31	4.72	4.72	48	3	0.1	28.7	13.0
FILCOTEN 4" (Tech E 100) STAINLESS STEEL RAIL CHANNEL 1	10410301	100	1	0.5%	5.31	5.51	4.72	4.92				29.5	13.4
FILCOTEN 4" (Tech E 100) STAINLESS STEEL RAIL CHANNEL 2	10410302	100	2	0.5%	5.51	5.71	4.92	5.12				31.1	14.1
FILCOTEN 4" (Tech E 100) STAINLESS STEEL RAIL CHANNEL 3	10410303	100	3	0.5%	5.71	5.91	5.12	5.31				32.6	14.8
FILCOTEN 4" (Tech E 100) STAINLESS STEEL RAIL CHANNEL 4	10410304	100	4	0.5%	5.91	6.1	5.31	5.51				34.0	15.4
FILCOTEN 4" (Tech E 100) STAINLESS STEEL RAIL CHANNEL 5	10410305	100	5	0.5%	6.1	6.3	5.51	5.71				35.1	15.9
FILCOTEN 4" (Tech E 100) STAINLESS STEEL RAIL CHANNEL 5-0	10410361	100	5-0	0.5%	6.3	6.3	5.71	5.71	70	4	0.2	35.5	16.1
FILCOTEN 4" (Tech E 100) STAINLESS STEEL RAIL CHANNEL 6	10410306	100	6	0.5%	6.3	6.5	5.71	5.91				36.2	16.4
FILCOTEN 4" (Tech E 100) STAINLESS STEEL RAIL CHANNEL 7	10410307	100	7	0.5%	6.5	6.69	5.91	6.1				37.0	16.8
FILCOTEN 4" (Tech E 100) STAINLESS STEEL RAIL CHANNEL 8	10410308	100	8	0.5%	6.69	6.89	6.10	6.3				38.4	17.4
FILCOTEN 4" (Tech E 100) STAINLESS STEEL RAIL CHANNEL 9	10410309	100	9	0.5%	6.89	7.09	6.30	6.5				39.7	18.0
FILCOTEN 4" (Tech E 100) STAINLESS STEEL RAIL CHANNEL 10	10410310	100	10	0.5%	7.09	7.28	6.50	6.69				40.8	18.5
FILCOTEN 4" (Tech E 100) STAINLESS STEEL RAIL CHANNEL 10-0	10410362	100	10-0	0.5%	7.28	7.28	6.69	6.69	95	6	0.2	41.2	18.7
FILCOTEN 4" (Tech E 100) STAINLESS STEEL RAIL CHANNEL 11	10410311	100	11	0.5%	7.68	7.68	6.69	6.89				41.9	19.0
FILCOTEN 4" (Tech E 100) STAINLESS STEEL RAIL CHANNEL 12	10410312	100	12	0.5%	7.87	8.07	6.89	7.09				44.8	20.3
FILCOTEN 4" (Tech E 100) STAINLESS STEEL RAIL CHANNEL 13	10410313	100	13	0.5%	8.07	8.27	7.09	7.28				47.6	21.6
FILCOTEN 4" (Tech E 100) STAINLESS STEEL RAIL CHANNEL 14	10410314	100	14	0.5%	8.27	8.46	7.28	7.48				50.5	22.9
FILCOTEN 4" (Tech E 100) STAINLESS STEEL RAIL CHANNEL 15	10410315	100	15	0.5%	8.46	8.66	7.48	7.68				53.4	24.2
FILCOTEN 4" (Tech E 100) GALVANIZED STEEL RAIL CHANNEL 16	10410316	100	16	0.5%	8.66	8.86	7.68	7.87				55.6	25.5

Product	Part Number	Series	Depth	Slope	Overall body inches		Invert Inches		Maximum flow rate			Weight (less grate)	
					Min Depth	Max Depth	Min	Max	GPM	LPS	CFS	Lbs	Kg
FILCOTEN 4" (Tech E 100) STAINLESS STEEL RAIL CHANNEL 17	10410317	100	17	0.5%	8.86	9.05	7.87	8.07				59.1	26.8
FILCOTEN 4" (Tech E 100) STAINLESS STEEL RAIL CHANNEL 18	10410318	100	18	0.5%	9.05	9.25	8.07	8.27				62.0	28.1
FILCOTEN 4" (Tech E 100) STAINLESS STEEL RAIL CHANNEL 19	10410319	100	19	0.5%	9.25	9.45	8.27	8.46				64.8	29.4
FILCOTEN 4" (Tech E 100) STAINLESS STEEL RAIL CHANNEL 20	10410320	100	20	0.5%	9.45	9.65	8.46	8.66				67.7	30.7
FILCOTEN 4" (Tech E 100) STAINLESS STEEL RAIL CHANNEL 20-0	10410364	100	20-0	0%	9.65	9.65	8.66	8.66				69.9	31.7
FILCOTEN 4" (Tech V 100) GALVANIZED STEEL RAIL CHANNEL 0	10410200	100	0	0%	5.31	5.31	4.72	4.72	48	3	0.1	28.7	13.0
FILCOTEN 4" (Tech V 100) GALVANIZED STEEL RAIL CHANNEL 1	10410201	100	1	0.5%	5.31	5.51	4.72	4.92				29.5	13.4
FILCOTEN 4" (Tech V 100) GALVANIZED STEEL RAIL CHANNEL 2	10410202	100	2	0.5%	5.51	5.71	4.92	5.12				31.1	14.1
FILCOTEN 4" (Tech V 100) GALVANIZED STEEL RAIL CHANNEL 3	10410203	100	3	0.5%	5.71	5.91	5.12	5.31				32.6	14.8
FILCOTEN 4" (Tech V 100) GALVANIZED STEEL RAIL CHANNEL 4	10410204	100	4	0.5%	5.91	6.1	5.31	5.51				34.0	15.4
FILCOTEN 4" (Tech V 100) GALVANIZED STEEL RAIL CHANNEL 5	10410205	100	5	0.5%	6.1	6.3	5.51	5.71				35.1	15.9
FILCOTEN 4" (Tech V 100) GALVANIZED STEEL RAIL CHANNEL 5-0	10410261	100	5-0	0.5%	6.3	6.3	5.71	5.71	70	4	0.2	35.5	16.1
FILCOTEN 4" (Tech V 100) GALVANIZED STEEL RAIL CHANNEL 6	10410206	100	6	0.5%	6.3	6.5	5.71	5.91				36.2	16.4
FILCOTEN 4" (Tech V 100) GALVANIZED STEEL RAIL CHANNEL 7	10410207	100	7	0.5%	6.5	6.69	5.91	6.1				37.0	16.8
FILCOTEN 4" (Tech V 100) GALVANIZED STEEL RAIL CHANNEL 8	10410208	100	8	0.5%	6.69	6.89	6.10	6.3				38.4	17.4
FILCOTEN 4" (Tech V 100) GALVANIZED STEEL RAIL CHANNEL 9	10410209	100	9	0.5%	6.89	7.09	6.30	6.5				39.7	18.0
FILCOTEN 4" (Tech V 100) GALVANIZED STEEL RAIL CHANNEL 10	10410210	100	10	0.5%	7.09	7.28	6.50	6.69				40.8	18.5
FILCOTEN 4" (Tech V 100) GALVANIZED STEEL RAIL CHANNEL 10-0	10410262	100	10-0	0.5%	7.28	7.28	6.69	6.69	95	6	0.2	41.2	18.7
FILCOTEN 4" (Tech V 100) GALVANIZED STEEL RAIL CHANNEL 11	10410211	100	11	0.5%	7.68	7.68	6.69	6.89				41.9	19.0
FILCOTEN 4" (Tech V 100) GALVANIZED STEEL RAIL CHANNEL 12	10410212	100	12	0.5%	7.87	8.07	6.89	7.09				44.8	20.3
FILCOTEN 4" (Tech V 100) GALVANIZED STEEL RAIL CHANNEL 13	10410213	100	13	0.5%	8.07	8.27	7.09	7.28				47.6	21.6



Channels and Trenches (cont.)

Product	Part Number	Series	Depth	Slope	Overall body inches		Invert Inches		Maximum flow rate			Weight (less grate)	
					Min Depth	Max Depth	Min	Max	GPM	LPS	CFS	Lbs	Kg
FILCOTEN 4" (Tech V 100) GALVANIZED STEEL RAIL CHANNEL 14	10410214	100	14	0.5%	8.27	8.46	7.28	7.48				50.5	22.9
FILCOTEN 4" (Tech V 100) GALVANIZED STEEL RAIL CHANNEL 15	10410215	100	15	0.5%	8.46	8.66	7.48	7.68				53.4	24.2
FILCOTEN 4" (Tech V 100) GALVANIZED STEEL RAIL CHANNEL 16	10410216	100	16	0.5%	8.66	8.86	7.68	7.87				55.6	25.5
FILCOTEN 4" (Tech V 100) GALVANIZED STEEL RAIL CHANNEL 17	10410217	100	17	0.5%	8.86	9.05	7.87	8.07				59.1	26.8
FILCOTEN 4" (Tech V 100) GALVANIZED STEEL RAIL CHANNEL 18	10410218	100	18	0.5%	9.05	9.25	8.07	8.27				62.0	28.1
FILCOTEN 4" (Tech V 100) GALVANIZED STEEL RAIL CHANNEL 19	10410219	100	19	0.5%	9.25	9.45	8.27	8.46				64.8	29.4
FILCOTEN 4" (Tech V 100) GALVANIZED STEEL RAIL CHANNEL 20	10410220	100	20	0.5%	9.45	9.65	8.46	8.66				67.7	30.7
FILCOTEN 4" (Tech V 100) GALVANIZED STEEL RAIL CHANNEL 20-0	10410264	100	20-0	0%	9.65	9.65	8.66	8.66				69.9	31.7
FILCOTEN 8" (Pro V 200) GALVANIZED RAIL CHANNEL 0	10620200	200	0	0%	10.43	10.43	9.45	9.45	369	23	0.8	97.0	44.0
FILCOTEN 8" (Pro V 200) GALVANIZED RAIL CHANNEL 1	10620201	200	1	0.5%	10.43	10.63	9.45	9.65				98.1	44.5
FILCOTEN 8" (Pro V 200) GALVANIZED RAIL CHANNEL 2	10620202	200	2	0.5%	10.63	10.83	9.65	9.84				100.3	45.5
FILCOTEN 8" (Pro V 200) GALVANIZED RAIL CHANNEL 3	10620203	200	3	0.5%	10.83	11.02	9.84	10.04				102.5	46.5
FILCOTEN 8" (Pro V 200) GALVANIZED RAIL CHANNEL 4	10620204	200	4	0.5%	11.02	11.22	10.04	10.24				104.9	45.6
FILCOTEN 8" (Pro V 200) GALVANIZED RAIL CHANNEL 5	10620205	200	5	0.5%	11.22	11.42	10.24	10.44				107.1	48.6
FILCOTEN 8" (Pro V 200) GALVANIZED RAIL CHANNEL 5-0	10620261	200	5-0	0%	11.42	11.42	10.44	10.44	439	28	1.0	108.7	49.3
FILCOTEN 8" (Pro V 200) GALVANIZED RAIL CHANNEL 6	10620206	200	6	0.5%	11.42	11.61	10.44	10.63				109.6	49.7
FILCOTEN 8" (Pro V 200) GALVANIZED RAIL CHANNEL 7	10620207	200	7	0.5%	11.61	11.81	10.63	10.83				111.8	50.7
FILCOTEN 8" (Pro V 200) GALVANIZED RAIL CHANNEL 8	10620208	200	8	0.5%	11.81	12.01	10.83	11.02				114.2	51.8
FILCOTEN 8" (Pro V 200) GALVANIZED RAIL CHANNEL 9	10620209	200	9	0.5%	12.01	12.2	11.02	11.22				116.4	52.8








Product	Part Number	Series	Depth	Slope	Overall body inches		Invert Inches		Maximum flow rate			Weight (less grate)	
					Min Depth	Max Depth	Min	Max	GPM	LPS	CFS	Lbs	Kg
FILCOTEN 8" (Pro V 200) GALVANIZED RAIL CHANNEL 10	10620210	200	10	0.5 %	12.2	12.4	11.22	11.42				118.8	53.9
FILCOTEN 8" (Pro V 200) GALVANIZED RAIL CHANNEL 10-0	10620262	200	10-0	0 %	12.4	12.4	11.42	11.42	515	33	1.2	119.7	54.3
FILCOTEN 8" (Pro V 200) GALVANIZED RAIL CHANNEL 11	10620211	200	11	0.5 %	12.4	12.6	11.42	11.61				120.6	54.7
FILCOTEN 8" (Pro V 200) GALVANIZED RAIL CHANNEL 12	10620212	200	12	0.5 %	12.6	12.8	11.61	11.81				122.6	55.6
FILCOTEN 8" (Pro V 200) GALVANIZED RAIL CHANNEL 13	10620213	200	13	0.5 %	12.8	12.99	11.81	12.01				124.3	56.4
FILCOTEN 8" (Pro V 200) GALVANIZED RAIL CHANNEL 14	10620214	200	14	0.5 %	12.99	13.19	12.01	12.20				126.3	57.3
FILCOTEN 8" (Pro V 200) GALVANIZED RAIL CHANNEL 15	10620215	200	15	0.5 %	13.19	13.39	12.20	12.40				128.1	58.1
FILCOTEN 8" (Pro V 200) GALVANIZED RAIL CHANNEL 16	10620216	200	16	0.5 %	13.39	13.58	12.40	12.60				130.1	59.0
FILCOTEN 8" (Pro V 200) GALVANIZED RAIL CHANNEL 17	10620217	200	17	0.5 %	13.58	13.78	12.60	12.80				131.8	59.8
FILCOTEN 8" (Pro V 200) GALVANIZED RAIL CHANNEL 18	10620218	200	18	0.5 %	13.78	13.98	12.80	12.99				183.8	60.7
FILCOTEN 8" (Pro V 200) GALVANIZED RAIL CHANNEL 19	10620219	200	19	0.5 %	13.98	14.17	12.99	13.19				138.6	61.5
FILCOTEN 8" (Pro V 200) GALVANIZED RAIL CHANNEL 20	10620220	200	20	0.5 %	14.17	14.37	13.19	13.38				137.4	62.3
FILCOTEN 8" (Pro V 200) GALVANIZED RAIL CHANNEL 20-0	10620264	200	20-0	0 %	14.37	14.37	13.38	13.38	678	43	1.5	138.2	62.7
FILCOTEN 12" (Pro V 300) GALVANIZED RAIL CHANNEL 0	10630200	300	0	0 %	14.17	14.17	12.79	12.79	870	55	1.9	166.7	75.6
FILCOTEN 12" (Pro V 300) GALVANIZED RAIL CHANNEL 1	10630201	300	1	0.5 %	14.17	14.37	12.79	12.99				168.2	76.3
FILCOTEN 12" (Pro V 300) GALVANIZED RAIL CHANNEL 2	10630202	300	2	0.5 %	14.37	14.57	12.99	13.19				171.1	77.6
FILCOTEN 12" (Pro V 300) GALVANIZED RAIL CHANNEL 3	10630203	300	3	0.5 %	14.57	14.76	13.19	13.38				173.9	78.9
FILCOTEN 12" (Pro V 300) GALVANIZED RAIL CHANNEL 4	10630204	300	4	0.5 %	14.76	14.96	13.38	13.58				176.8	80.2
FILCOTEN 12" (Pro V 300) GALVANIZED RAIL CHANNEL 5	10630205	300	5	0.5 %	14.96	15.15	13.58	13.78				179.7	81.5
FILCOTEN 12" (Pro V 300) GALVANIZED RAIL CHANNEL 5-0	10630261	300	5-0	0 %	15.15	15.15	13.78	13.78	984	62	2.19	181.0	82.1
FILCOTEN 12" (Pro V 300) GALVANIZED RAIL CHANNEL 6	10630206	300	6	0.5 %	15.15	15.35	13.78	13.98				182.5	82.8











Channels and Trenches (cont.)

Product	Part Number	Series	Depth	Slope	Overall body inches		Invert Inches		Maximum flow rate			Weight (less grate)	
					Min Depth	Max Depth	Min	Max	GPM	LPS	CFS	Lbs	Kg
FILCOTEN 12" (Pro V 300) GALVANIZED RAIL CHANNEL 7	10630207	300	7	0.5 %	15.35	15.55	13.98	14.17				185.4	84.1
FILCOTEN 12" (Pro V 300) GALVANIZED RAIL CHANNEL 8	10630208	300	8	0.5 %	15.55	15.75	14.17	14.37				188.3	85.4
FILCOTEN 12" (Pro V 300) GALVANIZED RAIL CHANNEL 9	10630209	300	9	0.5 %	15.75	15.94	14.37	14.57				191.1	86.7
FILCOTEN 12" (Pro V 300) GALVANIZED RAIL CHANNEL 10	10630210	300	10	0.5 %	15.94	16.14	14.57	14.76				194.0	88
FILCOTEN 12" (Pro V 300) GALVANIZED RAIL CHANNEL 10-0	10630262	300	10-0	0 %	16.14	16.14	14.76	14.76	1103	70	2.5	195.3	88.6
FILCOTEN 12" (Pro V 300) GALVANIZED RAIL CHANNEL 11	10630211	300	11	0.5 %	15.94	16.34	14.76	14.96				196.7	89.2
FILCOTEN 12" (Pro V 300) GALVANIZED RAIL CHANNEL 12	10630212	300	12	0.5 %	16.34	16.54	14.96	15.16				201.3	91.3
FILCOTEN 12" (Pro V 300) GALVANIZED RAIL CHANNEL 13	10630213	300	13	0.5 %	16.54	16.73	15.16	15.35				206.1	93.5
FILCOTEN 12" (Pro V 300) GALVANIZED RAIL CHANNEL 14	10630214	300	14	0.5 %	16.73	16.93	15.35	15.55				210.8	95.6
FILCOTEN 12" (Pro V 300) GALVANIZED RAIL CHANNEL 15	10630215	300	15	0.5 %	16.93	17.13	15.55	15.75				215.4	97.7
FILCOTEN 12" (Pro V 300) GALVANIZED RAIL CHANNEL 16	10630216	300	16	0.5 %	17.13	17.32	15.75	15.94				220.2	99.9
FILCOTEN 12" (Pro V 300) GALVANIZED RAIL CHANNEL 17	10630217	300	17	0.5 %	17.32	17.52	15.94	16.14				224.9	102
FILCOTEN 12" (Pro V 300) GALVANIZED RAIL CHANNEL 18	10630218	300	18	0.5 %	17.52	17.72	16.14	16.34				229.5	104.1
FILCOTEN 12" (Pro V 300) GALVANIZED RAIL CHANNEL 19	10630219	300	19	0.5 %	17.72	17.91	16.34	16.54				234.1	106.2
FILCOTEN 12" (Pro V 300) GALVANIZED RAIL CHANNEL 20	10630220	300	20	0.5 %	17.91	18.11	16.54	16.73				240.0	108.4
FILCOTEN 12" (Pro V 300) GALVANIZED RAIL CHANNEL 20-0	10630264	300	20-0	0 %	18.11	18.11	16.73	16.73	1349	85	3	240.3	109

Accessories

	Product Name	Part Number	Location	Materials	Lbs	Kg
	FC100 4" CATCH BASIN	10410292	1	FILCOTEN HPC	52.9	24.0
	FC100 END CAP, CLOSED	19010215	2	GALV STEEL	0.7	0.3
	FC100 4" ENDCAP W/OUTLET	19010216	3	GALV STEEL	0.9	0.4
	FC100 4" NO HUB BTM/OUTLET	19011204	4	GALV STEEL	0.7	0.3
	REBAR SUPPORT FOR 4IN CHANNEL	19010902	5	GALV STEEL	2.7	1.2
	FC100 4" SILT TRASH BUCKET	22515	6	PLASTIC	0.4	0.2
	FC100 4" VANDAL PROOF LOCK	32087	7	STAINLESS	0.2	0.1
	NDS 4"x4" NO-HUB FLEX COUPLER	56-44	8	FLEX RUBBER	1.7	0.8
	NDS 4" to 6" NO-HUB REDUCER COUPLER	56-64	9	FLEX RUBBER	2.2	1.0
	OPENING TOOL FOR MAINTENANCE UNIT (order 2)	13399	10	N/A	0.22	0.1
	FC200 8" CATCH BASIN	10620290	1	FILCOTEN HPC	105.8	48.0
	FC200 8" END CAP, CLOSED	19020215	2	GALV STEEL	1.7	0.8
	FC200 8" ENDCAP W/OUTLET	19020216	3	GALV STEEL	2.6	1.2
	FC200 8" NO HUB BTM/OUTLET	19021208	4	GALV STEEL	2.2	1.0
	REBAR SUPPORT FOR 8" CHANNEL	19020902	5	GALV STEEL	1.8	0.9
	FC200 8" SILT TRASH BUCKET	22512	6	PLASTIC	1.5	0.7
	FC200 8" VANDAL PROOF LOCK	32089	7	STAINLESS	0.5	0.2

	Product Name	Part Number	Location	Materials	Lbs	Kg
	FLCTN 200 8" STEP PLATE 0/10, 0/20	19020295	8	GALV STEEL	0.5	0.2
	8 PIPE CONNECTOR FOR CATCH BASIN	70154	9	PVC	2.4	1.1
	FC300 12" CATCH BASIN (ORDER w/70154 PIPE)	10630290	1	FILCOTEN HPC	270.1	122.5
	FC300 12" CATCH BASIN EXTENSION	19060020	1	FILCOTEN HPC	93.7	42.5
	FC300 12" END CAP, CLOSED	19030213	2	GALV STEEL	1.7	0.8
	FC300 12" END-CAP W/8" OUTLET	19030214	3	GALV STEEL	2.6	1.2
	FC300 12" NO HUB BTM w/8" OUTLET	19021208	4	GALV STEEL	2.2	1.0
	REBAR SUPPORT FOR 12" CHANNEL	19030902	5	GALV STEEL	2.4	1.1
	SEDIMENT BUCKET	22213	13	GALV STEEL	7.1	3.2
	FLCTN 300 12 INCH STEP PLATE 0/10, 0/20	19030295	8	GALV STEEL	0.5	0.2
	FLCTN 300 12 BASIN ENDCAP CONNECTOR	19030290	9	GALV STEEL	0.7	0.3
	BOLT FOR DUCTILE GRATE (ORDER 4 p/GRATE)	32110	11	IRON	0.1	0.03
	BOLT FOR GALV GRATE (ORDER 4 p/GRATE)	32112	12	GALV STEEL	0.1	0.03

Load Recommendation Guide

According to EN1433 Standards



CLASS A

- Max Design Load: 3,372 lbs.
- Pedestrians
- Bicyclists
- Planted areas



CLASS B

- Max Design Load: 28,100 lbs.
- Pedestrians
- Parking lots
- Delivery vehicles



CLASS C

- Max Design Load: 56,200 lbs.
- Curbs
- Road shoulders
- Parking lots



CLASS D

- Max Design Load: 89,920 lbs.
- Roadways
- Pedestrian zones
- Parking lots



CLASS E

- Max Design Load: 134,800 lbs.
- Industry
- Military
- High wheel loads

From NDS® The Leader in Stormwater Management

NDS is your knowledgeable and trusted partner for the best in water management solutions. Our products are engineered and produced for performance, durability, ease of installation and the efficient use of resources. We provide the service and support to ensure that you are successful.

Visit ndspro.com for:



Videos



Tools/
Calculators



Downloads



Case
Studies



Design
Worx



Request
a Quote



Need design help?

Contact our civil engineers and expert technicians at designworx@ndspro.com

Download our
**Mobile App - Search
for NDS Drainage**



GRASPOINTNER
Sustainable Innovation