

EZ-Drain[™]

Pre-Engineered French Drain System

Installation in Half the Time

**GRAVEL
FREE
INSTALLATION**



**50% or more
Labor Savings**

vs. Traditional Gravel Installations

- **Durable/Crushproof**
See installation instructions
- **100-Year Lifespan**
EZ-Drain Poly Rock[™] aggregate stays intact
- **Green Build**
Projects qualify for LEED[®] credits

EZ-Drain™

Pre-Engineered French Drain System

Easy to Install as...

One person can install EZ-Drain in minutes.



1 Dig Trench*

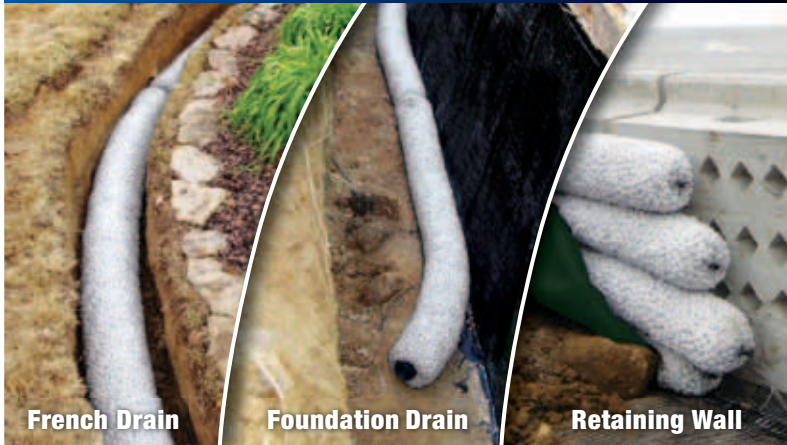
2 Connect & Lay in Trench

3 Cover with Soil

Dare to Compare

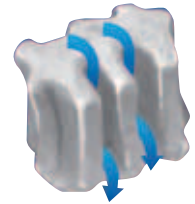
	Gravel	EZ-Drain	Advantages of EZ-Drain vs. Gravel
Labor Savings		✓	Up to 50% labor savings
Easy to Install		✓	EZ-Drain takes minutes versus hours for gravel
Load Rated	✓	✓	Load rated to support light vehicular traffic
Built to Last	✓	✓	Over 100 year lifespan
100% Recycled Content		✓	EZ-Drain Poly-Rock™ is 100% recycled content
Flow Rate		✓	EZ-Drain flow rate is 30% better than gravel
Protects Against Soil Fines		✓	Gravel contains some soil fines
Labor Savings on Site Cleanup		✓	No gravel to clean up

Applications



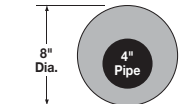
What is EZ-Drain?

EZ-Drain drain product is a 10 foot long slotted pipe surrounded by EZ-Drain Poly-Rock™ (polystyrene aggregate) and enclosed in a geotextile mesh. The patented EZ-Drain Poly-Rock™ aggregate is uniquely engineered with “flow channels” designed to increase void space — and is engineered for improved water flow rates, greater storage capacity and structural integrity to resist compaction and support vehicular traffic. Combining the pipe, aggregate and mesh in one product reduces the labor costs of installing a French Drain system by 50% or more.



Features

- Eliminates the need for gravel in a French Drain system
- Without gravel, labor cost of installing a French Drain is reduced by 50% or more
- Load rating to support light vehicular traffic
- Life expectancy of over 100 years
- 100% recycled aggregate



Part Number	Part Description	Size
EZ-0802F	EZ-Drain 8" mesh with 4" slotted pipe	8" x 10'

*For non traffic areas, install 6" below ground. For light traffic areas, install 12" below ground

NDS Part#: EZDrain_SS_Print_FNL_052012

