



NDS[®]
We put water in its place

Chambers

Stronger & Easier to Maintain

NDS[®] StormChamber[®]
is the most
cost effective
chamber solution

- Superior strength
- Fast, easy installation
- Simple maintenance
- 100+ year lifespan
- Easy to specify

STORMCHAMBER[®]

ndspro.com

MADE IN
USA

The Preferred Underground Stormwater Solution



Thermo-formed High Density Weight Polyethylene HMWPE material won't crack.

- Meets H-20 standards
- Up to 16' cover when deep installs are required for the 34" and 18". Up to 12' for the 44"
- Stack in 2 or 3 layers for high storage capacity in a small footprint
- Meets ASTM F2922 and F2787 standard

STRENGTH & FLEXIBILITY



FAST INSTALLATION

Save time, money, and avoid extra excavation. Ideal for roadways, parking lots and fields.

- Built in end walls
- No header pipe manifold system required
- Flexible design
- Lowest installed cost

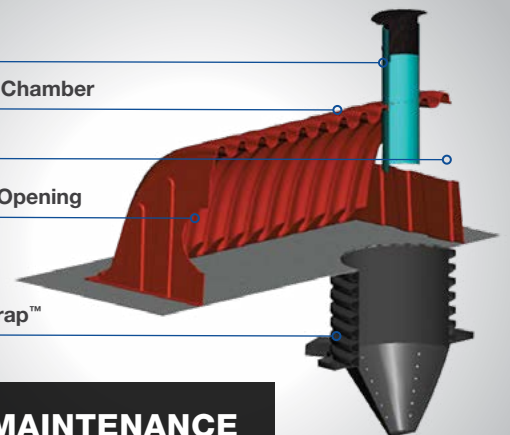
Riser Pipe

Inlet Start Chamber

Weir

Inlet Pipe Opening

SedimenTrap™



SIMPLE MAINTENANCE

Less time, less money and more forgiving.

- Differentiated and centralized sediment control through our propriety SedimenTrap™
- SedimenTrap™ gathers sediments and other pollutants in one place for quick, easy and inexpensive removal by vacuum truck



DURABILITY

Longest life expectancy on the market.

- Withstands the most extreme environments
- Material bends instead of breaks giving it a brittleness temperature of -107°F vs. industry average of -2°F
- 100 Year Life Expectancy

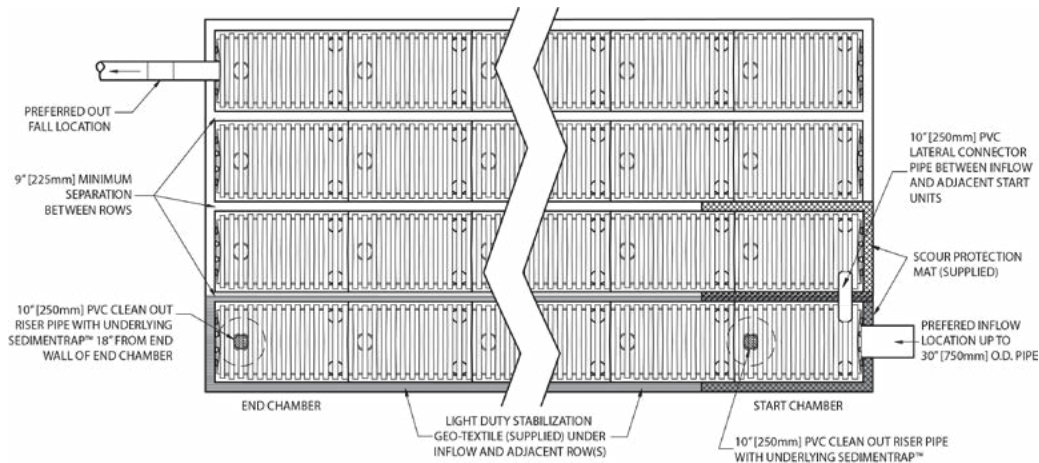


STACK

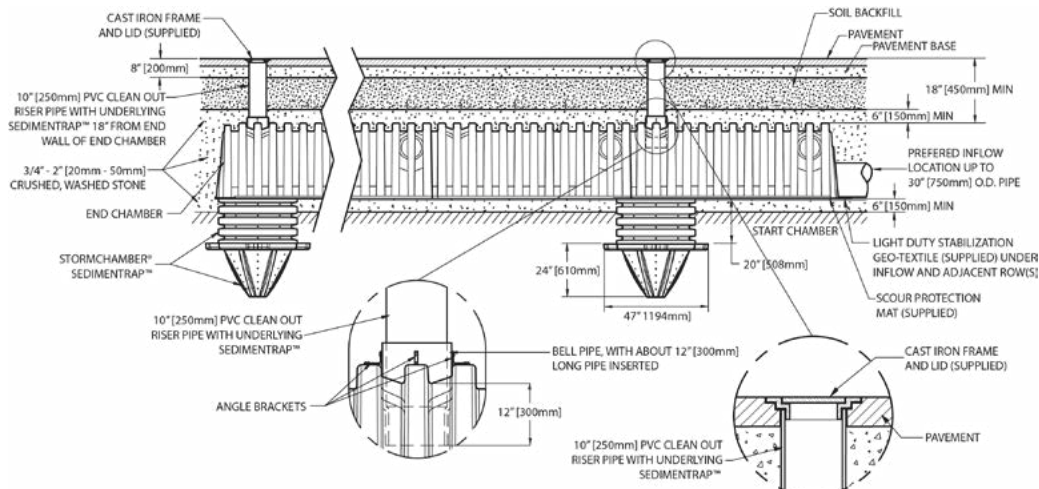
Allows for deeper installation and a smaller footprint

- 34" Chambers: Capable of 3-layer stacking
- 44" Chambers: Contact NDS DesignWorx for any projects that may need stacking
- We offer expert site-specific design guidance based on 20 years of successful completion of projects

NDS® StormChamber® Plan View (Configuration Example)



NDS® StormChamber® Elevated View



See How StormChambers Stack Up

	StormChamber	Competition
Header Pipe Mainfold In Flow/Out Flow	Not Required	Required
AASHTO H-20/H-193 Wheel Loaded Rating	Exceeds Standard	Meets Standard
End Caps to Purchase and Install	Not Required	Required
Maximum Height of Fill	up to 16' (4877 mm)	8' (2440mm)
Clean-out Inspection	In Minutes	Slow
Multilayer Installations	Up to 3 Layers	Single Layer

NDS® StormChamber®



Nominal Design Specifications Comparison	SC-44	SC-34E	SC-34W	SC-18
Minimum Installed Storage	141 ft³ (3.99 m³)	105 ft³ (2.97 m³)	103 ft³ (2.91 m³)	37 ft³ (1.05 m³)
Maximum Installed Storage	222 ft³ (6.29 m³)	156 ft³ (4.42 m³)	153 ft³ (4.33 m³)	65 ft³ (1.84 m³)
Height	44" (1118 mm)	34" (864 mm)	34" (864 mm)	18" (457 mm)
Width	76.25" (1937 mm)	60" (1524 mm)	60" (1524 mm)	38" (965 mm)
Actual Length (Closed unit)	89.5" (2273 mm)	103" (2616 mm)	101" (2565 mm)	101" (2565 mm)
Installed Length (Start/End Unit)	82.25" (2089 mm)	97" (2464 mm)	95" (2413 mm)	96" (2438 mm)
Installed Length (Middle Unit)	75" (1905 mm)	91" (2311 mm)	89" (2261 mm)	91.25" (2318 mm)
Weight	120 lbs (54.4 kg)	100 lbs (45.4 kg)	90 lbs (40.8 kg)	53 lbs (24.0 kg)
Chambers per Pallet	20	30	40	35
Material	Polyethylene	Polyethylene	Polyethylene	Polyethylene
Manufacturing Process	Thermoforming	Thermoforming	Thermoforming	Thermoforming
ASTM Loading Standard	Exceeds	Exceeds	Exceeds	Exceeds

Installation Specification Comparison				
Minimum Stone Above Chambers	12" (305 mm)	6" (152 mm)	6" (152 mm)	6" (152 mm)
Minimum Stone Below Chambers	9" (229 mm)	6" (152 mm)	6" (152 mm)	6" (152 mm)
Minimum Chamber Spacing	9" (229 mm)	9" (229 mm)	9" (229 mm)	6" (152 mm)
Minimum Stone Border	12" (305 mm)	12" (305 mm)	12" (305 mm)	12" (305 mm)
Maximum Cover	8' (2.44 m)	16" (4.88 m)	16" (4.88 m)	16" (4.88 m)
Minimum Cover	22" (559 mm)	18" (203 mm)	18" (203 mm)	18" (203 mm)

Product Codes				
Start Unit	SC-44105-S-O	SC-3475E-S-O	SC-3475W-S-O	SC-1820-S-O
Middle Unit	SC-44105-M-O	SC-3475E-M-O	SC-3475W-M-O	SC-1820-M-O
End Unit	SC-44105-E-O	SC-3475E-E-O	SC-3475W-E-O	SC-1820-E-O
Closed Unit	SC-44105-C-O	SC-3475E-C-O	SC-3475W-C-O	SC-1820-C-O

We're Here to Help



DesignWorx™ by NDS®: NDS civil engineers and expert technicians are available to help make your project a success. We can evaluate and help you with the preparation of submittal drawings and specs to align with best stormwater practices. **(888) 825-4716** | ndspro.com/submityourdesign

Onsite support: Our customer support team will provide free on-site installation assistance, as needed.

Download our Mobile App – Search for NDS Drainage

Take the powerful resources of the NDS site with you on the go!
Access our product catalog, online calculators and planning tools.



Visit ndspro.com for:



Videos



Tools/
Calculators



Downloads



Case
Studies



Design
Worx



Request
a Quote

NDS Customer Service

8800 W. Hurley Ave, Visalia, CA 93291

Phone: 800.726.1994 (option 3)