



# Swivel Fit<sup>®</sup>

Variable Angle Fitting

## Eliminate Extra Fittings

with one adjustable fitting for any job

## Convenient Solution

patent-pending design works around obstacles and corners

**Easy** 3-step installation

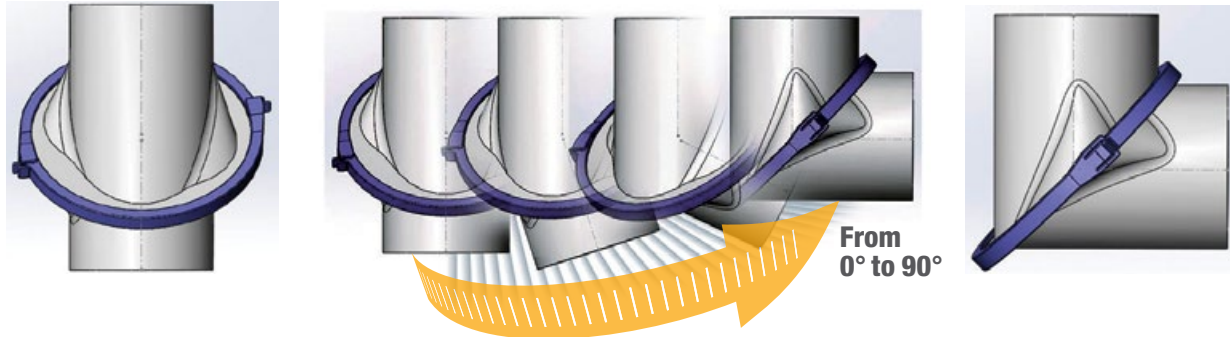
**Fits 4"** drain pipe SDR-35,  
Triple walland ASTM-D2729



not for sewer use

# One Adjustable Fitting For Any Job

The patent-pending Swivel Fit® Variable Angle Fitting can be set to any angle from 0° to 90°. It is a convenient solution to tackle any job and is easy and cheaper than connecting multiple fixed angle fittings.



## Multiple angle fittings in one!

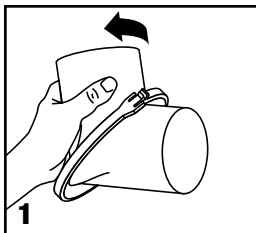
	0°	15°	22°	30°	45°	60°	90°
4PV02							✓
4PV03					✓		
4PV04			✓				
4PV05	✓						
4PVAF	✓	✓	✓	✓	✓	✓	✓

**ANY ANGLE.  
ANYTIME.**

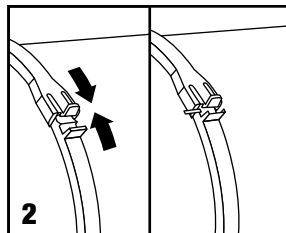
*FITS THESE ANGLES AND  
EVERYTHING IN-BETWEEN!*

Model No.	Description	Product Category
4PVAF	NDS 4" Swivel Fit®	30PV

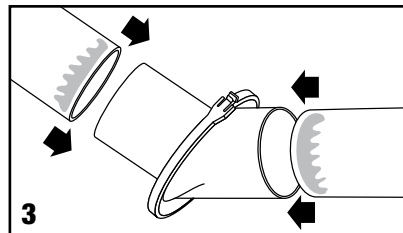
## Installation in 3 Easy Steps



1 Rotate fitting to desired angle.



2 Lock angle in place by completely closing both locking ring clips



3 Glue drainage pipe in both ends of fitting.

For use with 4-inch SDR-35, Triple wall and ASTM-D2729

Not for sewer applications