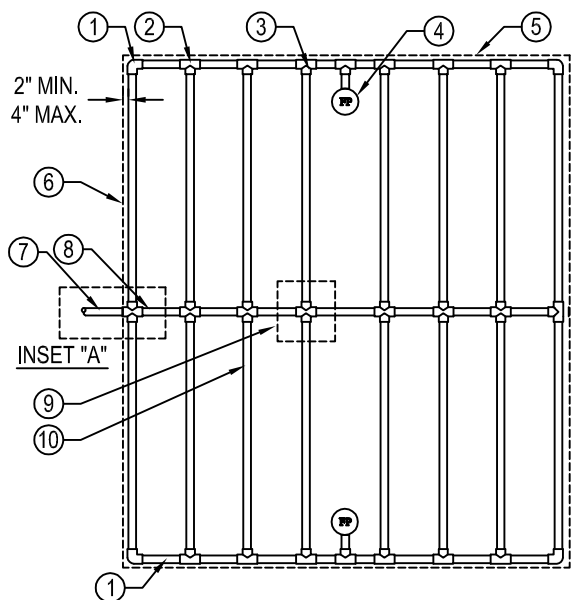




NDS, INC.
851 NORTH HARVARD AVE.
LINDSAY, CA 93247
TOLL FREE: 1-800-726-1994
PHONE: (559) 562-9888
FAX: (559) 562-4488
www.ndspro.com

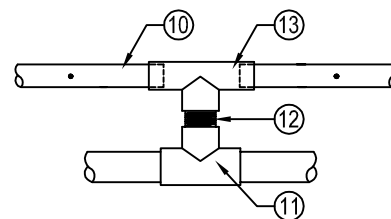


LAYOUT

LEGEND:

- ① PVC EXHAUST HEADER
- ② PVC SCHEDULE 40 "T" OR "L" (TYPICAL)
- ③ BARB "X" MALE FITTING, AGRIFIM BTMA 1750 (TYPICAL)
- ④ FLUSH POINT, AGRIFIM CEP 18 (TYPICAL)
- ⑤ PERIMETER OF AREA
- ⑥ PERIMETER DRIP LINE PIPE TO BE INSTALLED 2" MIN. 4" MAX. FROM PERIMETER OF AREA
- ⑦ PVC SUPPLY PIPE FROM FILTERED AND REGULATED CONTROL VALVE (SIZE TO MEET LATERAL FLOW DEMAND)
- ⑧ PVC SUPPLY MANIFOLD
- ⑨ CONNECTION FROM SUPPLY MANIFOLD TO DRIPLINE (TYPICAL) SEE INSET DETAIL "A"
- ⑩ ON SURFACE DRIPLINE, AGRIFIM DURA-FLO CV (TYPICAL)
- ⑪ 3/4" PVC SLIP, SLIP, THREAD "T" FITTING.
- ⑫ 3/4" PVC NIPPLE LENGTH AS NECESSARY
- ⑬ AGRIFIM 3/4" CST, FHT SWIVEL TEE WITH SCREEN

INITIAL PRESSURE	AGRIFIM DURA FLOW CV MAXIMUM LENGTH OF RUN (FEET)								
	17 MM SERIES - (0.560" ID X 0.660" O.D.)								
	12" SPACING			18" SPACING			24" SPACING		
	0.4 GPH	0.6 GPH	0.9 GPH	0.4 GPH	0.6 GPH	0.9 GPH	0.4 GPH	0.6 GPH	0.9 GPH
15 PSI	261'	221'	161'	347'	292'	214'	420'	354'	260'
20 PSI	357'	300'	221'	477'	399'	294'	576'	488'	358'
25 PSI	422'	354'	259'	563'	471'	346'	684'	575'	421'
30 PSI	471'	395'	289'	629'	526'	385'	765'	642'	471'
35 PSI	514'	429'	314'	687'	571'	418'	835'	699'	512'
40 PSI	550'	460'	336'	735'	618'	449'	893'	748'	549'
45 PSI	582'	486'	355'	779'	650'	473'	947'	791'	581'
50 PSI	610'	508'	372'	818'	677'	493'	995'	830'	610'

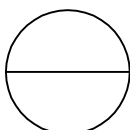


INSET "A"

NOTES:

(www.ndspro.com/agrifim/dripperline)

- DISTANCE BETWEEN LATERAL RINGS AND EMITTER SPACING TO BE BASED ON SOIL TYPE AND TREE CANOPY. SEE INSTALLATION SPECIFICATIONS ON AGRIFIM WEBSITE FOR SUGGESTED SPACING.
- LENGTH OF LONGEST DRIPLINE LATERAL SHOULD NOT EXCEED THE MAXIMUM LENGTH OF RUN SHOWN ON TABLE.
- INSTALLATION TO BE COMPLETED IN ACCORDANCE WITH MANUFACTURER'S SPECIFICATIONS.
- DO NOT SCALE DRAWING.
- THIS DRAWING IS INTENDED FOR USE BY ARCHITECTS, ENGINEERS, CONTRACTORS, CONSULTANTS AND DESIGN PROFESSIONALS FOR PLANNING PURPOSES ONLY.
- ALL INFORMATION CONTAINED HEREIN WAS CURRENT AT THE TIME OF DEVELOPMENT BUT MUST BE REVIEWED AND APPROVED BY THE PRODUCT MANUFACTURER TO BE CONSIDERED ACCURATE.



AGRIFIM

DURA-FLO CV - ON-SURFACE DRIPLINE CENTER FEED LAYOUT