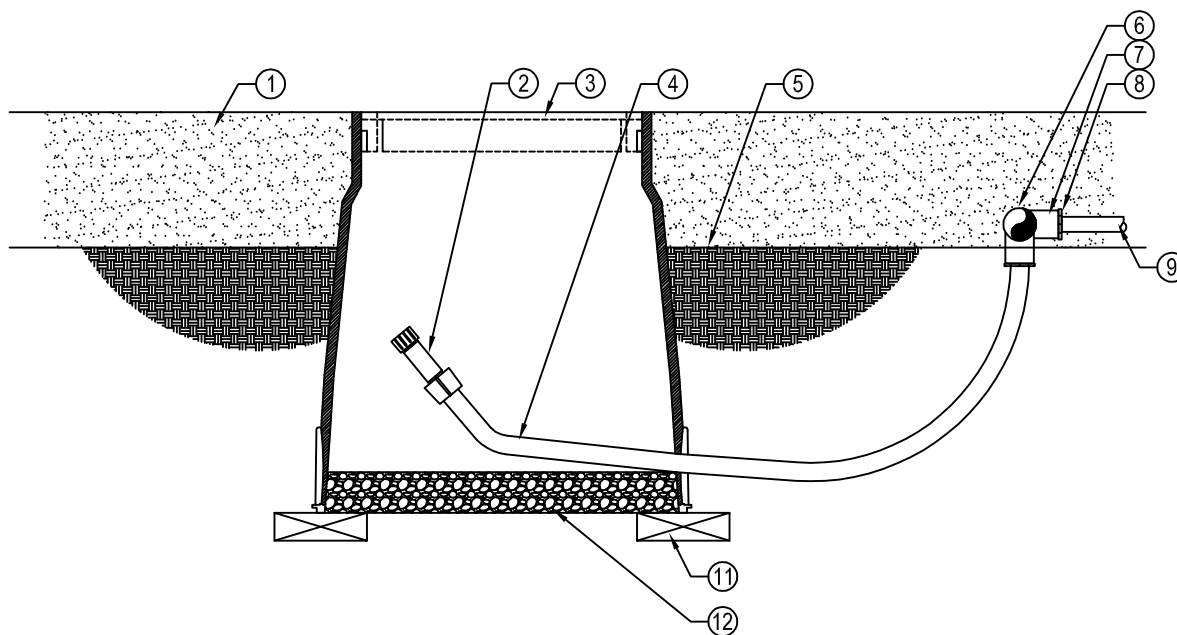




NDS, INC.
 851 NORTH HARVARD AVE.
 LINDSAY, CA 93247
 TOLL FREE: 1-800-726-1994
 PHONE: (559) 562-9888
 FAX: (559) 562-4488
 www.ndspro.com



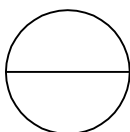
SECTION

LEGEND:

- ① MULCH
- ② SMART-LOC FITTINGS, AGRIFIM CEP 18 (TYPICAL)
- ③ EMITTER BOX ARGIFIM EB6
- ④ 1/2" POLYETHYLENE TUBING, AGRIFIM A660/BR
- ⑤ FINISH GRADE
- ⑥ PVC EXHAUST HEADER
- ⑦ PVC SCHEDULE 40 "T" OR "L"
- ⑧ ON SURFACE DRIPLINE, AGRIFIM DURA-FLO CV
- ⑨ 3" MIN. DEPTH OF 3/4" WASHED GRAVEL
- ⑩ BRICK (1 OF 2)

NOTES:

- 1. ALLOW A MINIMUM OF 6 INCHES OF DRIPLINE TUBING IN VALVE BOX IN ORDER TO DIRECT FLUSHED WATER OUTSIDE VALVE BOX.
- 2. INSTALLATION TO BE COMPLETED IN ACCORDANCE WITH MANUFACTURER'S SPECIFICATIONS.
- 3. DO NOT SCALE DRAWING.
- 4. THIS DRAWING IS INTENDED FOR USE BY ARCHITECTS, ENGINEERS, CONTRACTORS, CONSULTANTS AND DESIGN PROFESSIONALS FOR PLANNING PURPOSES ONLY.
- 5. ALL INFORMATION CONTAINED HEREIN WAS CURRENT AT THE TIME OF DEVELOPMENT BUT MUST BE REVIEWED AND APPROVED BY THE PRODUCT MANUFACTURER TO BE CONSIDERED ACCURATE.



AGRIFIM

DURA-FLO CV - ON-SURFACE DRIPLINE FLUSH POINT W/ AGRIFIM SMART LOC FITTINGS