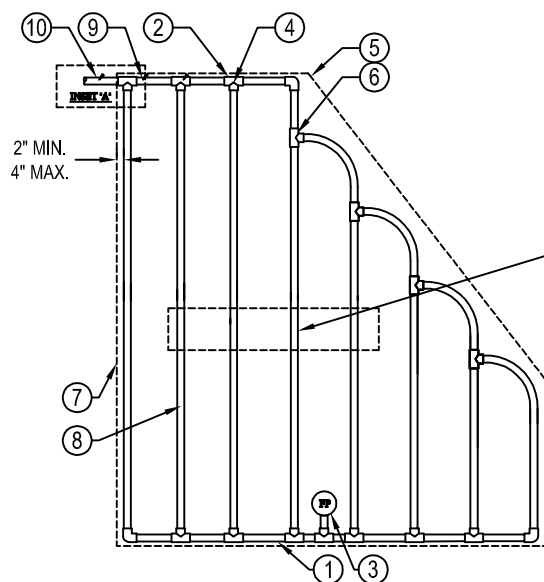
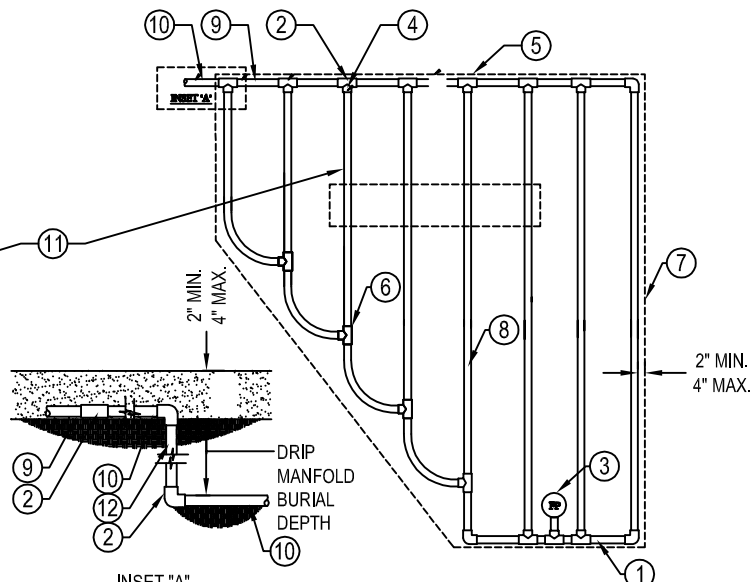




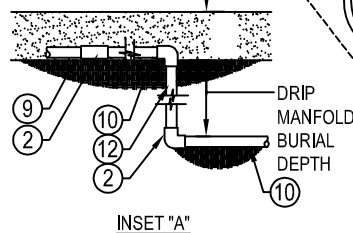
NDS, INC.
851 NORTH HARVARD AVE.
LINDSAY, CA 93247
TOLL FREE: 1-800-726-1994
PHONE: (559) 562-9888
FAX: (559) 562-4488
www.ndspro.com



LAYOUT



LAYOUT



INSET "A"

INITIAL PRESSURE	AGRIFIM DURA FLOW CV MAXIMUM LENGTH OF RUN (FEET)								
	17 MM SERIES - (0.560" ID X 0.660" O.D.)								
	12" SPACING			18" SPACING			24" SPACING		
	0.4 GPH	0.6 GPH	0.9 GPH	0.4 GPH	0.6 GPH	0.9 GPH	0.4 GPH	0.6 GPH	0.9 GPH
15 PSI	261'	221'	161'	347'	292'	214'	420'	354'	260'
20 PSI	357'	300'	221'	477'	399'	294'	576'	488'	358'
25 PSI	422'	354'	259'	563'	471'	346'	684'	575'	421'
30 PSI	471'	395'	289'	629'	526'	385'	765'	642'	471'
35 PSI	514'	429'	314'	687'	571'	418'	835'	699'	512'
40 PSI	550'	460'	336'	735'	618'	449'	893'	748'	549'
45 PSI	582'	486'	355'	779'	650'	473'	947'	791'	581'
50 PSI	610'	508'	372'	818'	677'	493'	995'	830'	610'

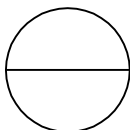
LEGEND:

- ① PVC EXHAUST HEADER
- ② PVC SCHEDULE 40 "T" OR "L" (TYPICAL)
- ③ FLUSH POINT, AGRIFIM CEP 18 (TYPICAL)
- ④ BARB "X" MALE FITTING, AGRIFIM BTMA 1750 (TYPICAL)
- ⑤ PERIMETER OF AREA
- ⑥ BARB "X" BARB INSERT "T" OR "X", AGRIFIM T17 OR CR17
- ⑦ PERIMETER DRIP LINE PIPE TO BE INSTALLED 2" MIN. 4" MAX. FROM PERIMETER OF AREA.
- ⑧ ON-SURFACE DRIP LINE, AGRIFIM DURA-FLO CV
- ⑨ PVC SUPPLY MANIFOLD
- ⑩ PVC SUPPLY PIPE FROM FILTERED AND REGULATED VALVE KIT (SIZE TO MEET LATERAL FLOW DEMAND)
- ⑪ TOTAL LENGTH OF SELECTED DRIP LINE SHOULD NOT EXCEED LENGTH IN TABLE
- ⑫ PVC SCHEDULE 40 RISER PIPE.
- ⑬ MULCH

NOTES:

(www.ndspro.com/agrifim/dripperline)

1. DISTANCE BETWEEN LATERAL RINGS AND EMITTER SPACING TO BE BASED ON SOIL TYPE AND TREE CANOPY. SEE INSTALLATION SPECIFICATIONS ON AGRIFIM WEBSITE FOR SUGGESTED SPACING.
2. LENGTH OF LONGEST DRIPLINE LATERAL SHOULD NOT EXCEED THE MAXIMUM LENGTH OF RUN SHOWN ON TABLE.
3. INSTALLATION TO BE COMPLETED IN ACCORDANCE WITH MANUFACTURER'S SPECIFICATIONS.
4. DO NOT SCALE DRAWING.
5. THIS DRAWING IS INTENDED FOR USE BY ARCHITECTS, ENGINEERS, CONTRACTORS, CONSULTANTS AND DESIGN PROFESSIONALS FOR PLANNING PURPOSES ONLY.
6. ALL INFORMATION CONTAINED HEREIN WAS CURRENT AT THE TIME OF DEVELOPMENT BUT MUST BE REVIEWED AND APPROVED BY THE PRODUCT MANUFACTURER TO BE CONSIDERED ACCURATE.



AGRIFIM

DURA-FLO CV - ON-SURFACE DRIPLINE IRREGULAR SHAPED LAYOUT