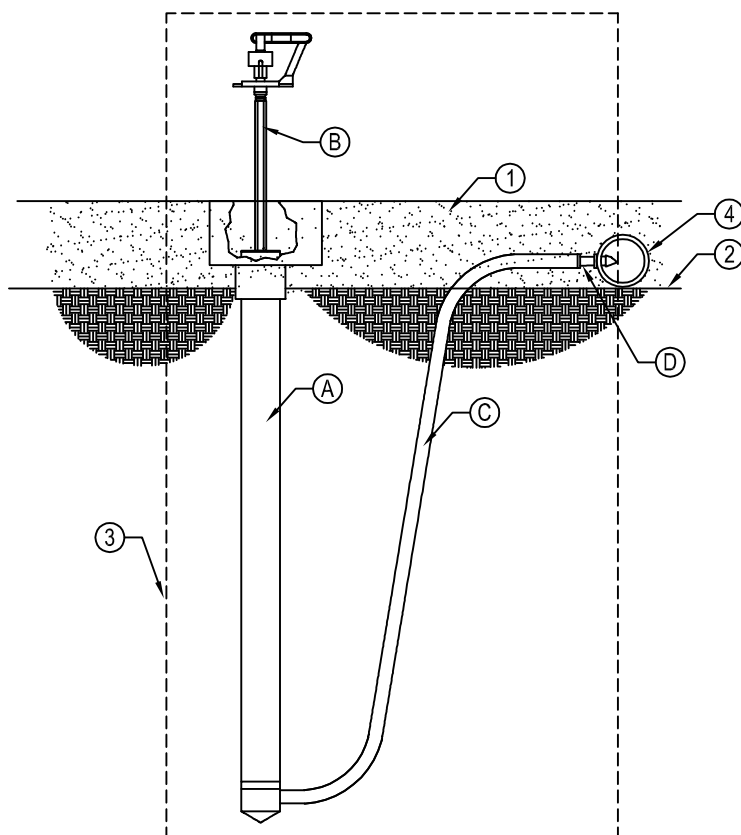




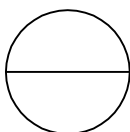
NDS, INC.  
 851 NORTH HARVARD AVE.  
 LINDSAY, CA 93247  
 TOLL FREE: 1-800-726-1994  
 PHONE: (559) 562-9888  
 FAX: (559) 562-4488  
 www.ndspro.com



- LEGEND:
- ① MULCH
  - ② FINISH GRADE
  - ③ ZONE RUN INDICATOR, AGRIFIM - ZRI
    - Ⓐ 4' HYDRAPOP - HYP250
    - Ⓑ DAFT 380
    - Ⓒ 12' PIECE A 250
    - Ⓓ C250
  - ④ ON SURFACE DRIPLINE, AGRIFIM DURA-FLO CV

**NOTES:**

1. USE HP125 PRO TO INSERT BARB TRANSFER FITTING DIRECTLY INTO DRIP LINE TUBING.
2. ADJUST DAFT FAN TO CLOSED POSITION - IF SPRAY IS DESIRED OPEN NOZZLE 2 CLICKS, THE FLOW FOR THE 2 GPM SHOULD BE ACCOUNTED FOR IN THE SYSTEM DESIGN.
3. INSTALLATION TO BE COMPLETED IN ACCORDANCE WITH MANUFACTURER'S SPECIFICATIONS.
4. DO NOT SCALE DRAWING.
5. THIS DRAWING IS INTENDED FOR USE BY ARCHITECTS, ENGINEERS, CONTRACTORS, CONSULTANTS AND DESIGN PROFESSIONALS FOR PLANNING PURPOSES ONLY.
6. ALL INFORMATION CONTAINED HEREIN WAS CURRENT AT THE TIME OF DEVELOPMENT BUT MUST BE REVIEWED AND APPROVED BY THE PRODUCT MANUFACTURER TO BE CONSIDERED ACCURATE.



**AGRIFIM**

DURA-FLO CV - ON-SURFACE DRIPLINE ZONE RUN INDICATOR