

NDS FILCOTEN Stainless Steel Brick Slot Drain Keeps the Focus on the Pavers at High-End Apartment

Project Name: The Boulevard

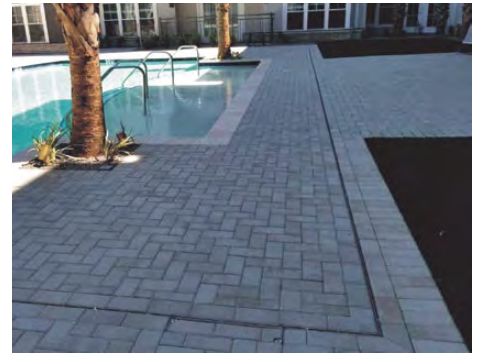
Location: Mount Pleasant, SC

Property Size: Commercial – Small (<1-10 Acres)

Products: Channel/Trench Drains

Property Type: Apartment Complex

Partners: Seaman Whiteside & Associates, Pleasant Places Commercial Landscaping & Associates



Challenge: Apartment pool deck needs drainage solution that ensures design integrity

The Boulevard is an upscale apartment complex located in Mount Pleasant, NC. With Sullivan's Island beaches and historic downtown Charleston close by, it was important for the designer to select a style of surface drain that did not distract from the surrounding character. Before construction was complete, Seaman Whiteside brought in a local NDS specifications manager to assist in selecting the channel drain to best complement the pool's surrounding hardscape area.

Solution: Filcoten slot drain meets both drainage and appearance requirements

The local NDS product specialist was able to review all options with the design team which determined the Filcoten 304 stainless-steel brick slot drain was the best choice for the project. In addition to being virtually undetectable, which allowed the architect to achieve the desired look around the pool, the slot drain was ideal for the specified drainage requirements. The area required approximately 182 ft. of channel and was installed to match the exact radius of the pool. In addition, the product met important safety criteria as its maximum slot opening is 6mm, which qualifies as both heelproof and meets ADA requirements. To ensure a quality installation, a local NDS product specialist worked directly with the installer to provide additional support during the entire process, which was completed in April of 2020.

Impact: Beautiful finished look provides durable, long-lasting performance

Guidance from NDS helped the design team choose a more suitable alternative to the wider, more conspicuous plastic linear drain found on most pool decks, which would have detracted from the overall appearance. The Filcoten trench drain is not only intentionally understated, but the 304 stainless steel holds up better to the harsh environment around a chlorine pool and will last for years to come.

[Click here for the complete Filcoten Brochure](#)

Visit ndspro.com for:



Videos



Tools/
Calculators



Downloads



Case
Studies



Request
a Quote

NDS Customer Service

851 N. Harvard Ave., Lindsay, CA 93247

Phone: 800.726.1994 · 559.562.9888

Fax: 800.726.1998 · 559.562.4488