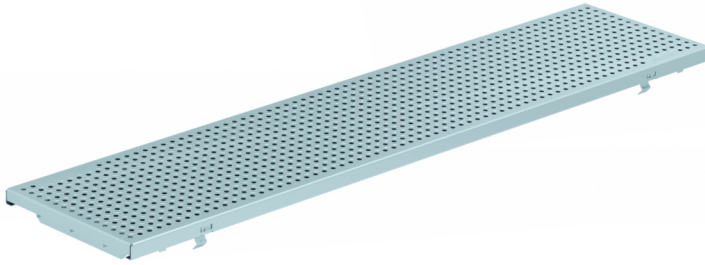


**ADA HEELPROOF Perforated grating**



**Product Features:**

- Certified to EN 1433 Load Class C 250 kN - 56,200 lbs.
- Uses fiX self-locking system.
- Suitable to use with NW200 channels.
- Manufactured from galvanized steel
- Hot-Dip galvanized material.
- Complies with ADA - American Disabilities Act.

**Installation:**

- The trench drain system and grates shall be installed in accordance with the manufacturer's installation instructions and recommendations.

Gratings FILCOTEN® pro – v 200 (8") with fiX self-locking system.

	Item no.	Gratings	Material	Dimention	Load class as per EN-standard	Slot-/Mesh width	Weight		Inlet cross-section sq.inches	Inlet cross-section cm2/m
							Lbs	Kg		
○	17020228	ADA HEELPROOF Perforated grating	galvanized steel	39.40"/8.74"/0.78" 1000/222/20	C 250 kN	Ø 1/4" hole (6,0 mm)	29.76	13.5	26.35	170
○	17020229	ADA HEELPROOF Perforated grating	galvanized steel	19.70"/8.74"/0.78" 500/222/20	C 250 kN	Ø 1/4" hole (6,0 mm)	14.77	6.7	26.35	170

**Specification:** FILCOTEN pro-tec NW200, heavy duty, (Load Class C 250 kN), galvanized steel, reinforced grate is 8.74" (222mm) wide, 39.40" (1000mm) long, 0.78" (20mm) high, weighing 29.76 lbs (13.5 kg). The grate has Ø1/4" (6mm) diameter hole and is ADA compliant and Class C load rated - commercial applications. The grate is secured to the body with four point fiX self-locking (snap-on) system. Galvanized steel manufactured and tested according to EN1433 - CE certified.

C250kN d6: V 17020328 (17020329), E 17020228 (17020229)

