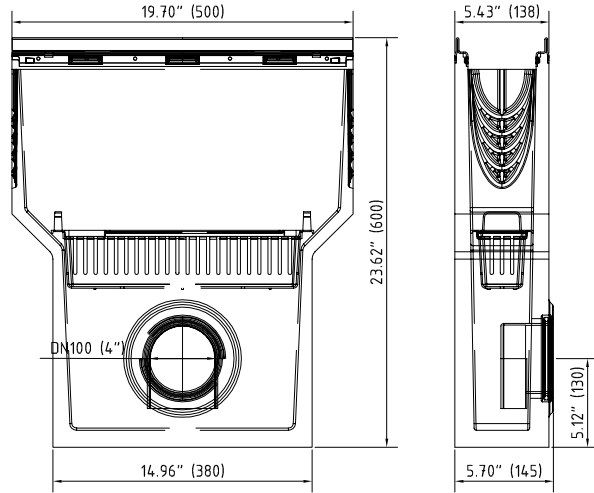


Accessories

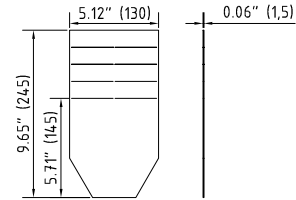
1. Sump unit:
 (optional: Drain trap: 30056
 Silt bucket: 22515)

V 10610290

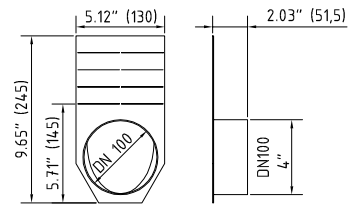


2. End cap:

V 19010215



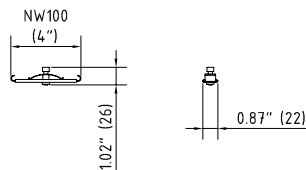
V 19010216



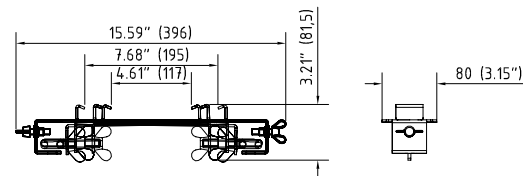
Accessories FILCOTEN® pro – V 100 (4")

Item Nno.	Accessories	Material	Weight	
			LBS	kg
○ 10610290	Catch basin 6" with cast iron rails and 4" outlet with seal	FILCOTEN	71.43	32.4
○ 22515	Sediment bucket for catch basin	plastic	0.44	0.2
○ 19010215	Front/end cap galvanized steel (for channels 0 up to 20-0)	galvanized	0.66	0.3
○ 19010200	Front/end cap mini galvanized steel	galvanized	0.22	0.1
○ 19010204	4" No Hub bottom outlet	galvanized	0.66	0.3
○ 19010216	4" No Hub end cap outlet	galvanized	1.10	0.5
○ 19010915	Rebar support	fabricated steel	2.64	1.2
○ 19010295	Step connector NW100 pro 0/10-0/20-0	galvanized	0.22	0.1

3. Anti-vandal locking device 32087:



4. Rebar Support:



* See detailed spec sheets for the Anti-vandal locking device and the Rebar support.