

12 in. Square Catch Basin Drains

APPLICATION

- Collects stormwater runoff and standing water and directs to drain pipes
- Use for lawns, landscaped areas, downspouts, patios, pool decks, driveways, and walkways from pedestrian to low-speed vehicular traffic loads
- Savings over more expensive concrete basins
- Use with compatible NDS grate options

FEATURES

- Configured with 2, 3 and 4 factory pre-keyed outlets
- Reduce to 1 single outlet, order 1206 plug or buy kit
- Keyed pipe connectors for 3 in., 4 in., 6 in., or 8 in. drain pipes
- Additional cut-out guides on 2 sides and bottom for keyed adapters, 3 in. and 4 in. S&D in 2 elevations
- 4 weephole knockouts allow for standing water in basin to slowly drain into the soil following a flow event
- Supporting ribs for added grate strength and durability
- Sump collects sediment particles before they can enter the pipeline
- Guidelines on basin sides indicate correct pour depth of the concrete collar required for basins that will be subject to vehicular loading (see installation detail)
- Risers can be stacked to increase basin depth, as required
- Accepts 2 #6 screws to attach compatible grates

OPERATING RANGE

- Capacity up to 348 GPM (max open area grate option)

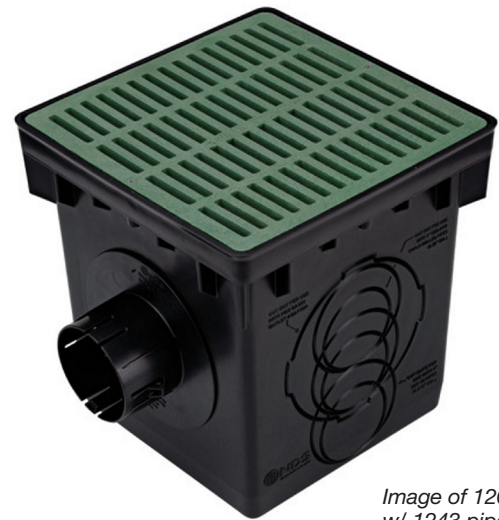
SPECIFICATIONS

- Made of black polypropylene using a combination of virgin and recycled content treated with UV inhibitors
- Soil-tight pipe connections, up to 8 in.
- Connections can be made watertight with sealant caulk
- Accommodates rigid PVC pipe and flexible corrugated HDPE pipe (see connectors or cutout sizes)
- Weight:
 - Part Number 1200: 4.25 lbs.
 - Part Number 1203: 3.75 lbs.
 - Part Number 1204: 3.20 lbs.

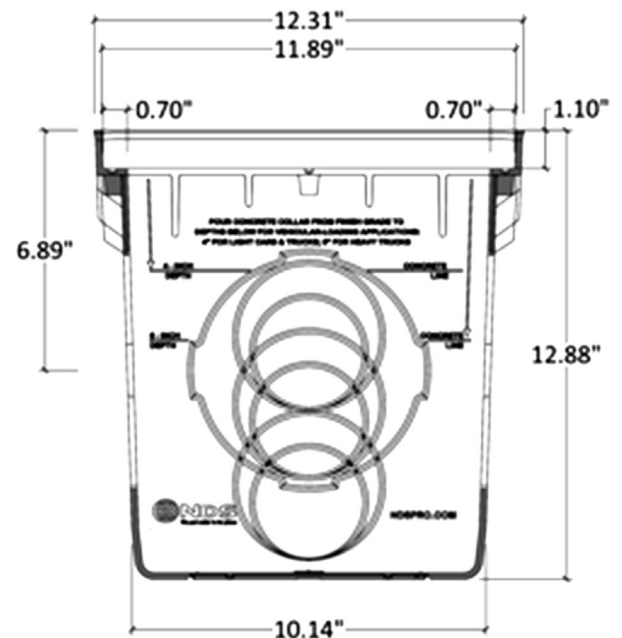
WARRANTY

- Limited one-year warranty

Part Number 1200 = 2 side outlets
Part Number 1203 = 3 side outlets
Part Number 1204 = 4 side outlets



*Image of 1200 basin
w/ 1243 pipe connector
w/ 1212 slotted grate
w/ 1206 plug on far side*



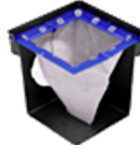
NDS 12 in. Tapered Catch Basins

Part Number	Pre-keyed Outlet
1200	2 openings
1203	3 openings
1204	4 openings



Compatible NDS Filter

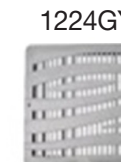
Part Number	Description
1200FF	12 in. Catch Basin Filter



Cutaway view of
1200FF in Catch Basin

Compatible NDS Grates

Part Number	Color	Material	Description	Flow Rate*
1213	Gray	Ductile iron	Slotted ADA-compliant NDS Class C load rated	114 GPM
1215	Silver	Galvanized steel	Slotted NDS Class C load rated	348 GPM
1230B	Brass	Brass	Slotted ADA-compliant NDS Class B load rated	131 GPM
1210	Gray	HDPE	Slotted ADA-compliant NDS Class B load rated	155 GPM
1211	Black			
1212	Green			
1212S	Sand			
1218	Black	HDPE	Decorative botanical design ADA-compliant NDS Class B load rated	75 GPM
1218GR	Green			
1218GY	Gray			
1218S	Sand			
1218CI	Gray	Cast iron		
1224	Black	HDPE	Decorative wave design ADA-compliant NDS Class B load rated	79 GPM
1224GR	Green			
1224GY	Gray			
1224S	Sand			
1224CI	Gray	Cast iron	Decorative wave design ADA-compliant, heel-proof NDS Class B load rated	
1200DSG	Black	HDPE	Downspout Defender®	247 GPM
1280	Green	HDPE	Domed atrium	155 GPM
1290	Black			
1220	Black	HDPE	Solid cover	N/A



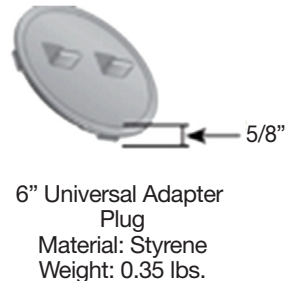
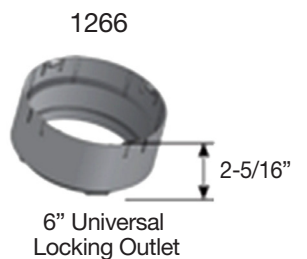
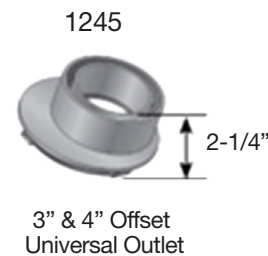
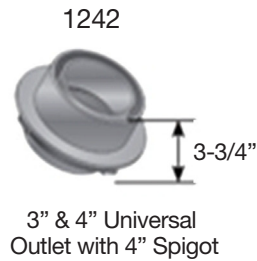
*Calculated with 0.5" of head above grate top

Compatible Outlet Adapters & Plug

	Part Number	Flow Rate*	Pipe Diameter	Invert Depth**
A	1242	78 GPM	3 in.	8.69 in.
			4 in.	9.31 in.
B	1243	78 GPM	3 in.	8.75 in.
			4 in.	9.38 in.
C	1245 (high elevation)	70 GPM	3 in.	7.88 in.
			4 in.	8.38 in.
	1245 (left)	76 GPM	3 in.	8.94 in.
			4 in.	9.44 in.
	1245 (right)	76 GPM	3 in.	8.50 in.
			4 in.	9.00 in.
D	1245 (low elevation)	83 GPM	3 in.	9.63 in.
			4 in.	10.13 in.
E	1266	247 GPM	6 in.	10.31 in.
F	1889 (low elevation)	238 GPM	8 in.	11.38 in.
F	1206	N/A	N/A	N/A

*Calculated with 0.5" of head above basin rim

** Vertical inches from basin rim to pipe invert in outlet



Compatible NDS Accessories

Part Number	Description
1216	12 in. Catch Basin Riser, 6 in. nested height
1217	12 in. Catch Basin Riser with 2 openings, 10 in. nested height

