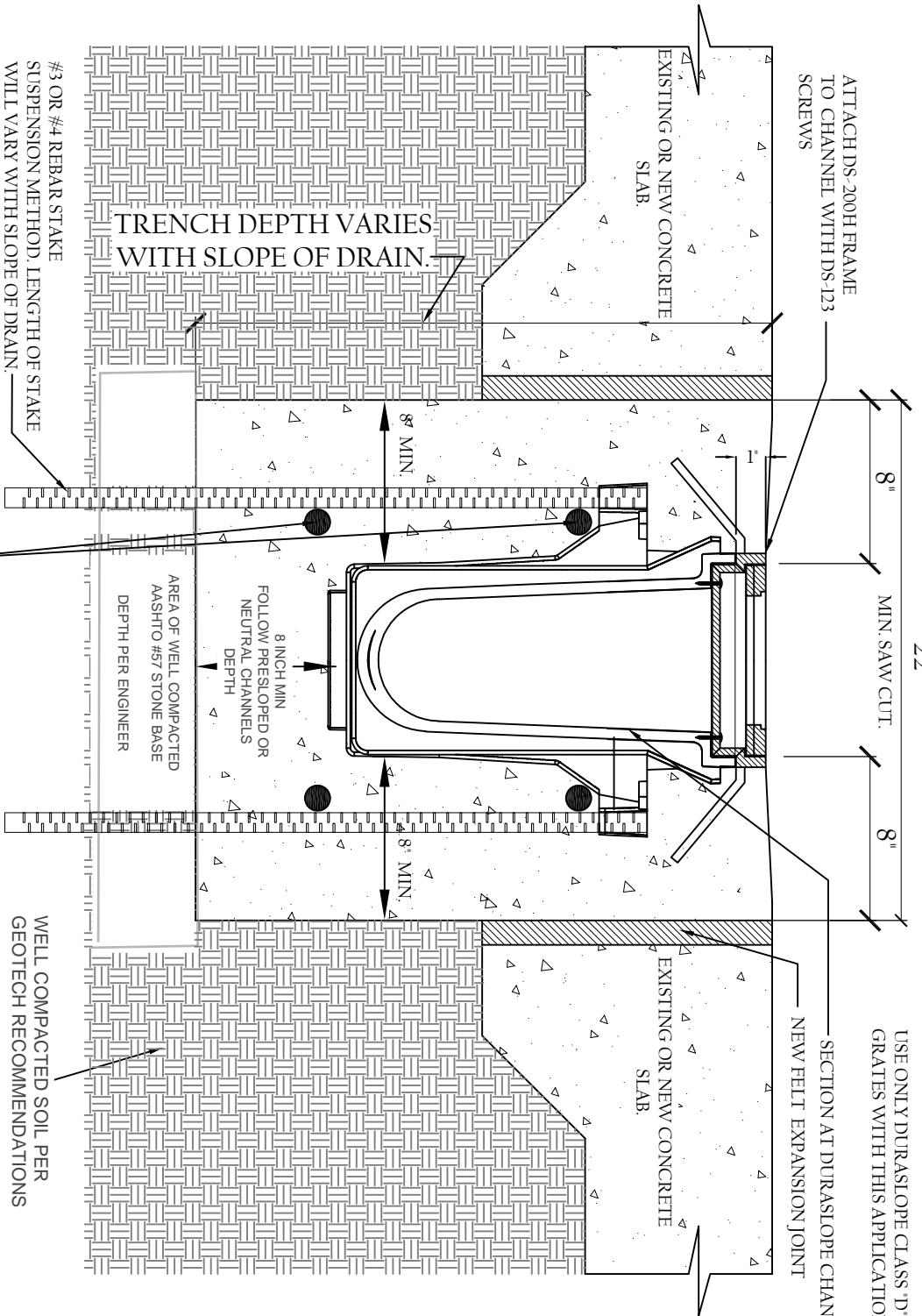


ATTACH DS-200H FRAME TO CHANNEL WITH DS-123 SCREWS

USE ONLY DURASLOPE CLASS 'D' GRATES WITH THIS APPLICATION.

SECTION AT DURASLOPE CHANNEL NEW FELT EXPANSION JOINT



TRENCH DEPTH VARIES WITH SLOPE OF DRAIN.

#3 OR #4 REBAR STAKE SUSPENSION METHOD. LENGTH OF STAKE WILL VARY WITH SLOPE OF DRAIN.

#4 REBAR HORIZONTAL PLACE TOP & BTM. OF CONC. POUR 3" CLR @ BTM. (TYP)

8 INCH MIN FOLLOW PRESLOPED OR NEUTRAL CHANNELS DEPTH

AREA OF WELL COMPACTED AASHTO #57 STONE BASE DEPTH PER ENGINEER

WELL COMPACTED SOIL PER GEOTECH RECOMMENDATIONS

**NOTE:**

CHANNELS TO BE INSTALLED WITH BLANK GRATE. GRATE TO BE PROTECTED FROM CONCRETE POUR (COVER HOLES WITH TAPE).

SET TRENCH DRAIN IN CHANNEL SURROUNDED BY 8" OF CONCRETE OR THICKNESS OF THE CONCRETE SLAB WITH A MINIMUM OF 3,500 P.S.I. AVOID FULL LOAD TRAFFIC FOR 28 DAYS OR UNTIL CONCRETE HAS COMPLETELY HARDENED.

# TYPICAL DURASLOPE INSTALLATION