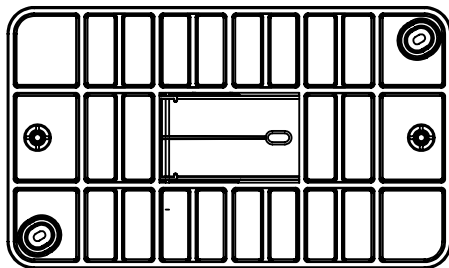
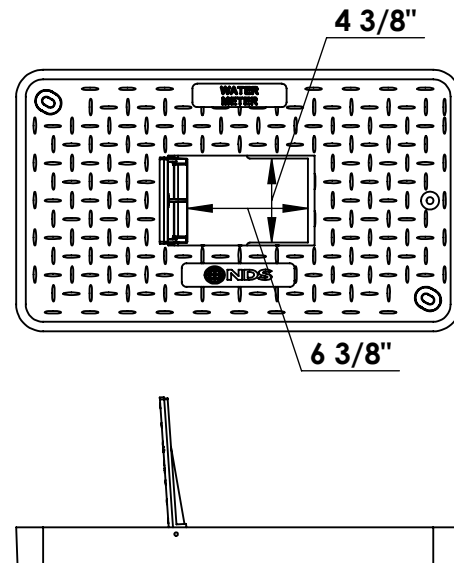
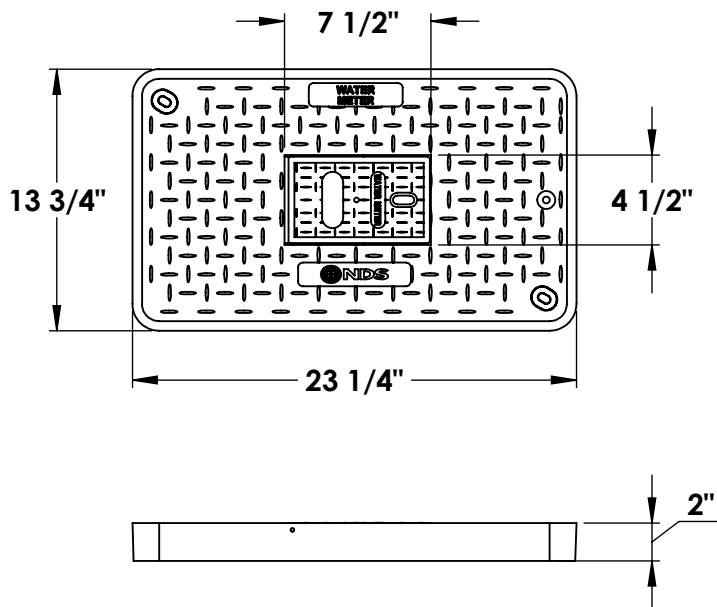
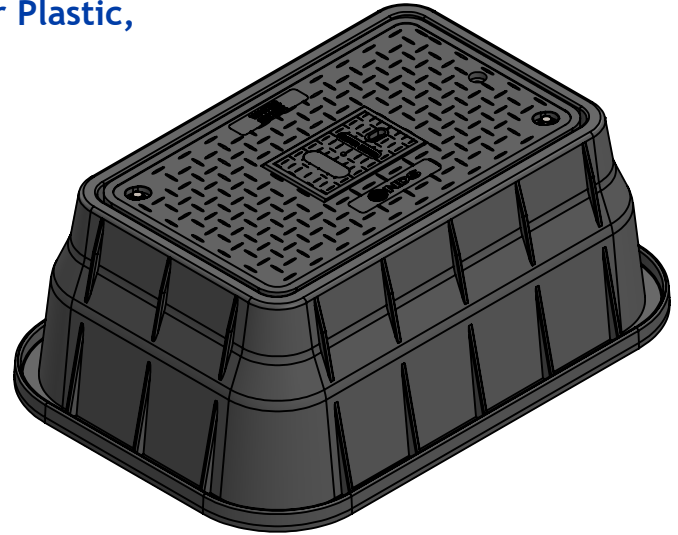


13"x24"x12" Box, Bolt-Down Drop-in Meter Reader Plastic, w/ Plastic Reader Cover - WATER METER

SPECIFICATIONS

- MATERIAL-Cover: UV protected HD Polyethylene – Black
- MATERIAL-Door: UV protected HD Polyethylene – Black
- MATERIAL-Box: UV protected Polypropylene – Black
- WEIGHT (lbs.): Cover 4.6 / Box 17.6 / Total 24.0 (w/ hardware)
- LOAD RATING: Pedestrian and lawn care equipment
- Limited 1 Year Warranty



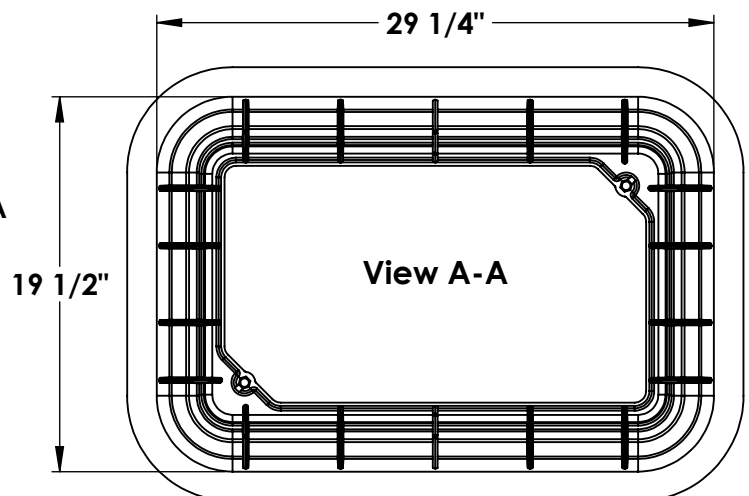
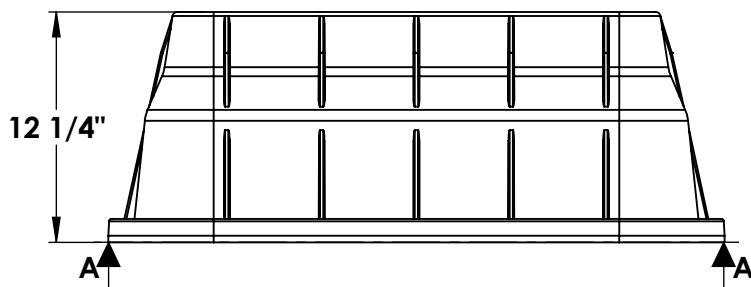
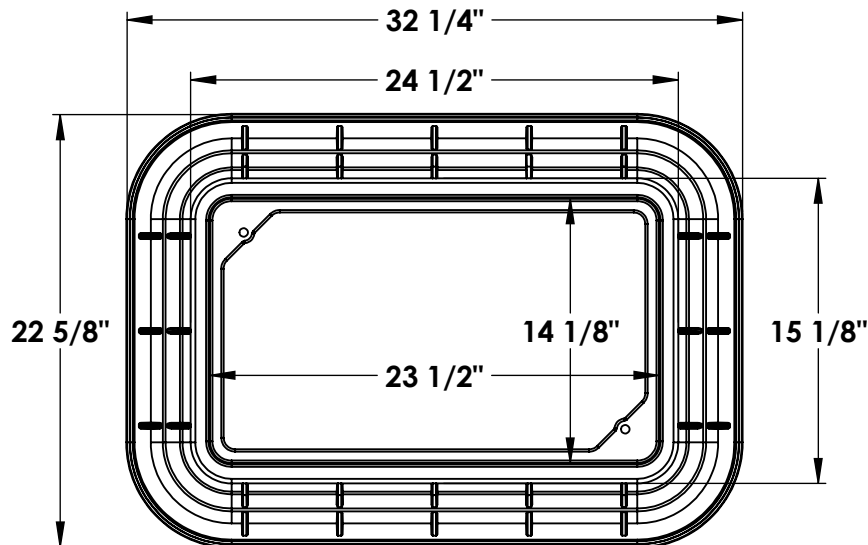
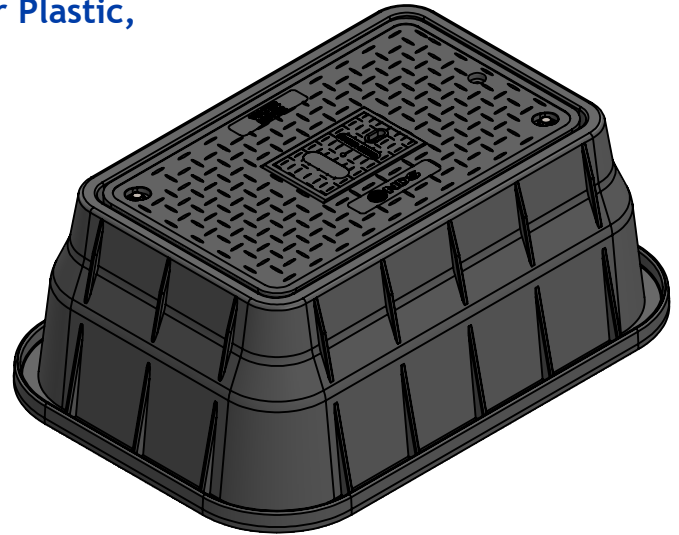
See Next Page for Box Dimensions

dimensions and weights are typical and vary slightly

**13"x24"x12" Box, Bolt-Down Drop-in Meter Reader Plastic,
w/ Plastic Reader Cover - WATER METER**

SPECIFICATIONS

- MATERIAL-Cover: UV protected HD Polyethylene – Black
- MATERIAL-Door: UV protected HD Polyethylene – Black
- MATERIAL-Box: UV protected Polypropylene – Black
- WEIGHT (lbs.): Cover 4.6 / Box 17.6 / Total 24.0 (w/ hardware)
- LOAD RATING: Pedestrian and lawn care equipment
- Limited 1 Year Warranty



dimensions and weights are typical and vary slightly