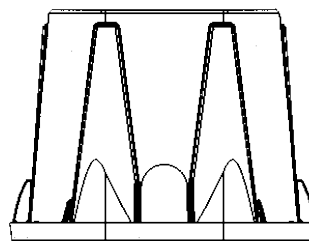
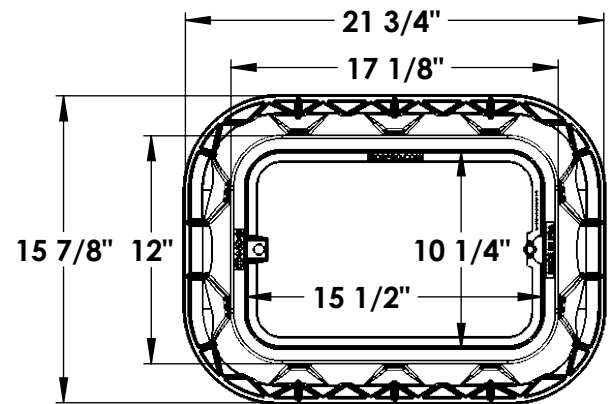
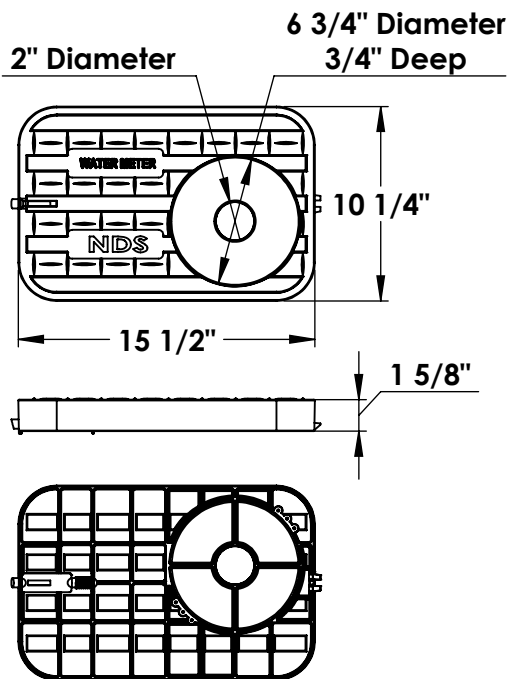
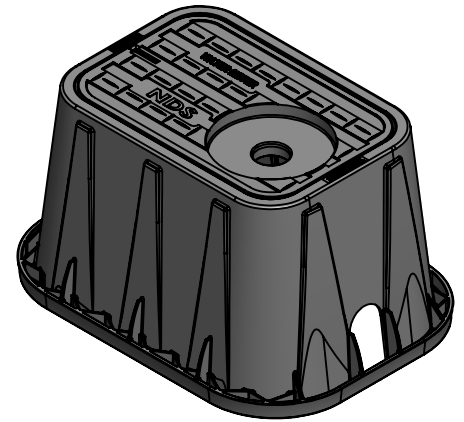


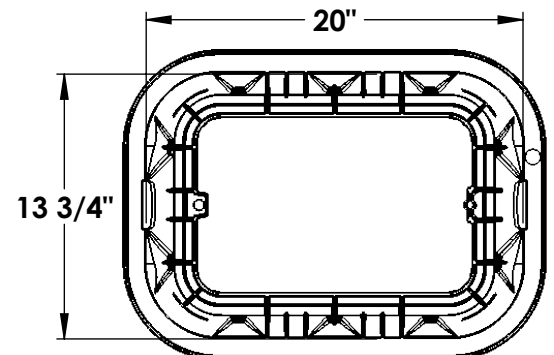
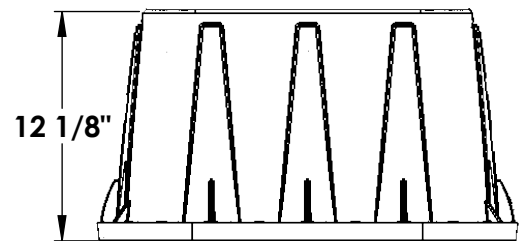
**14"x19"x12" Standard Box, Drop-in Locking Solid Plastic,
Single 2" AMR/TR Hole w/ 7" Top Recess Cover - Water Meter**

SPECIFICATIONS

- COVER ONLY: D12-TAMRL
- BOX ONLY: D1200-B/O
- MATERIAL-Cover: UV protected HD Polyethylene – Black
- MATERIAL-Box: UV protected Polypropylene – Black
- WEIGHT (lbs.): Cover 2.0 / Box 5.7 / Total 7.7
- LOAD RATING: Pedestrian and lawn care equipment
- Limited 1 Year Warranty



Pipe Slot
2 1/2" x 3 1/4"



dimensions and weights are typical and vary slightly