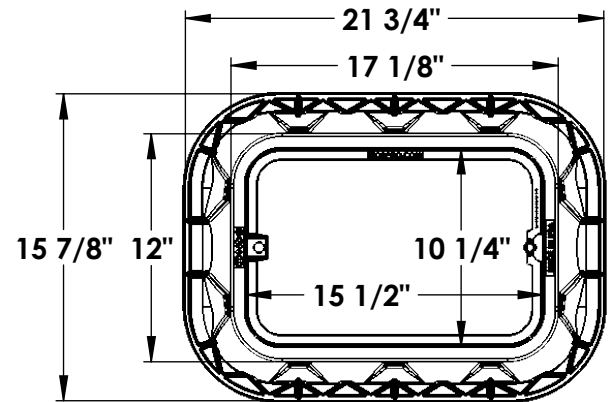
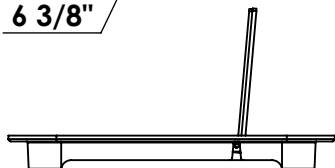
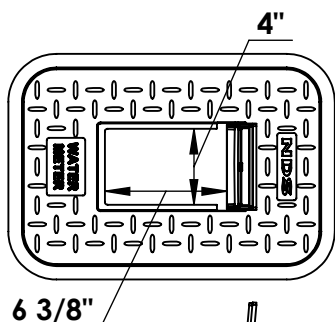
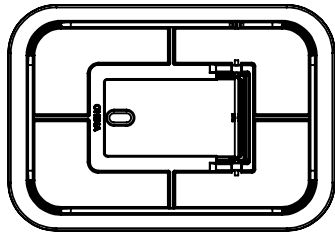
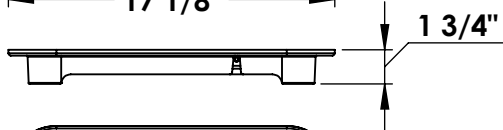
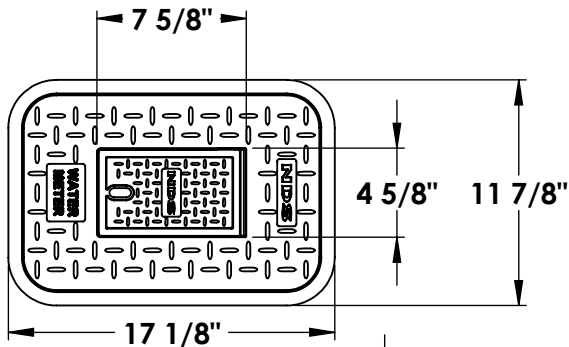
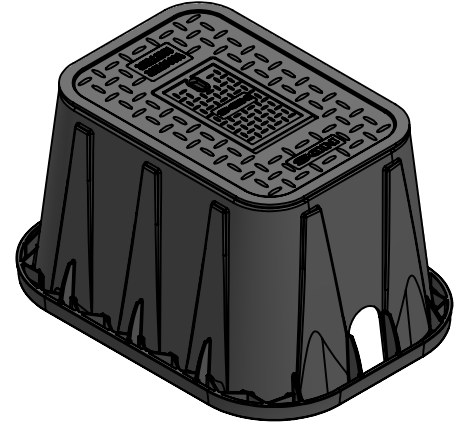


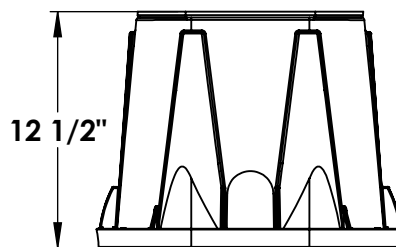
14"x19"x12" Standard Box, Overlapping Meter Reader Cast Iron, w/ Cast Iron Reader Cover - WATER METER

SPECIFICATIONS

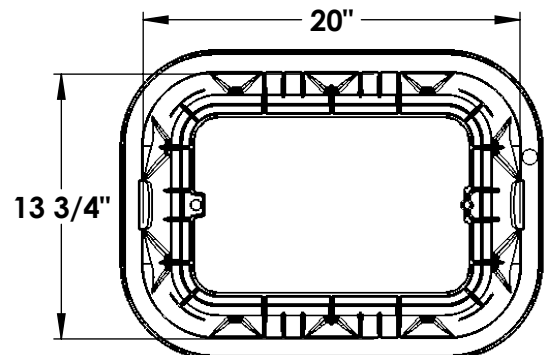
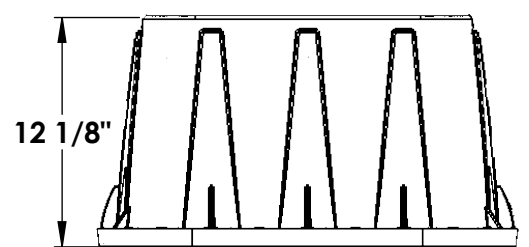
- BOX ONLY: D1200-B/O
- MATERIAL-Cover: Cast Iron - Black
- MATERIAL-Door: Cast Iron - Black
- MATERIAL-Box: UV protected Polypropylene – Black
- WEIGHT (lbs.): Cover 16.5 / Box 5.7 / Total 22.2
- LOAD RATING: Pedestrian and lawn care equipment
- Limited 1 Year Warranty



With
Cover



Pipe Slot
2 1/2" x 3 1/4"



dimensions and weights are typical and vary slightly