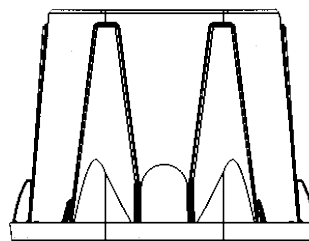
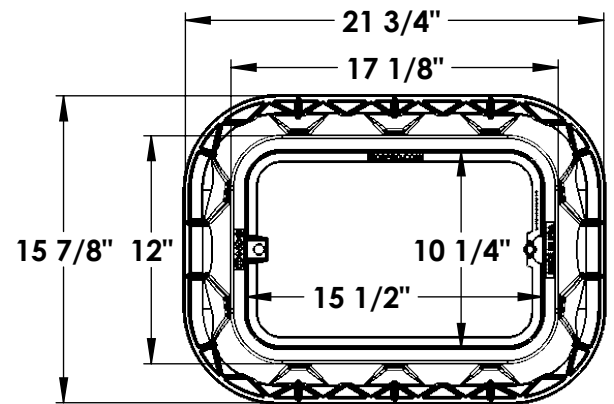
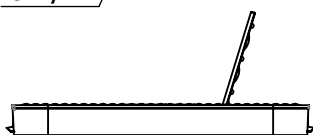
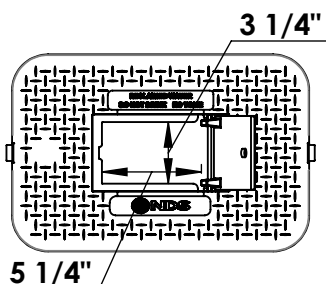
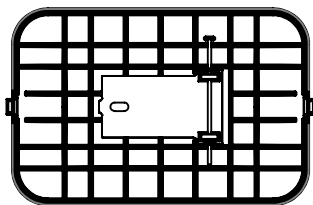
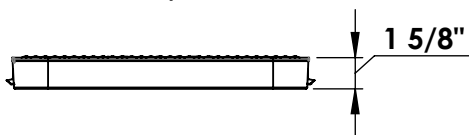
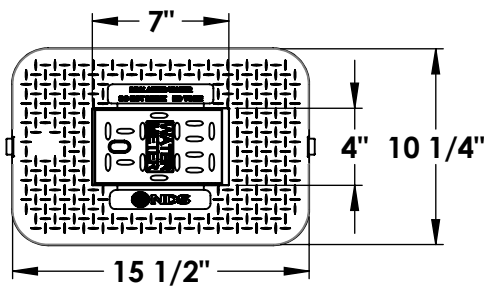
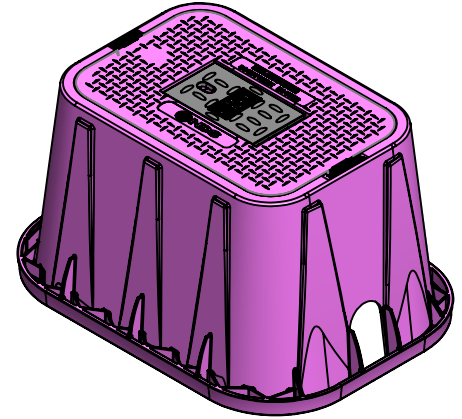


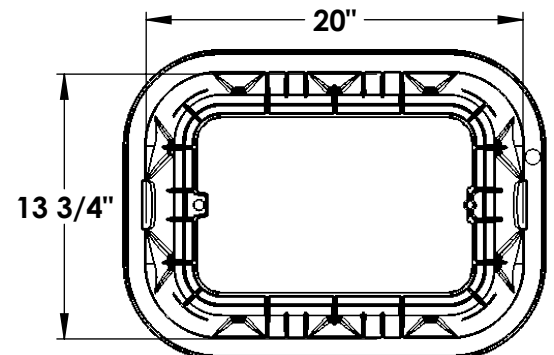
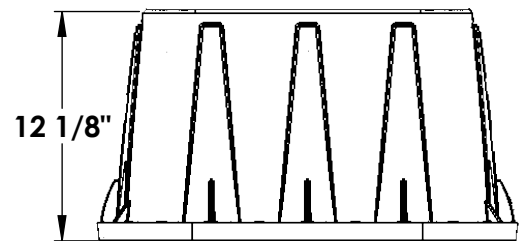
**14"x19"x12" Standard Box, Drop-in Meter Reader Plastic,  
w/ Cast Iron Reader Cover - RECLAIMED WATER**

**SPECIFICATIONS**

- MATERIAL-Cover: UV protected HD Polyethylene – Purple
- MATERIAL-Door: Cast Iron – Black
- MATERIAL-Box: UV protected Polypropylene – Purple
- WEIGHT (lbs.): Cover 3.6 / Box 5.7 / Total 9.3
- LOAD RATING: Pedestrian and lawn care equipment
- Limited 1 Year Warranty



**Pipe Slot**  
**2 1/2" x 3 1/4"**



*dimensions and weights are typical and vary slightly*