

PROJECT NAME:

FILE #

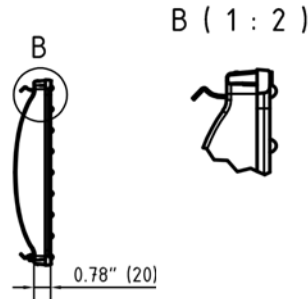
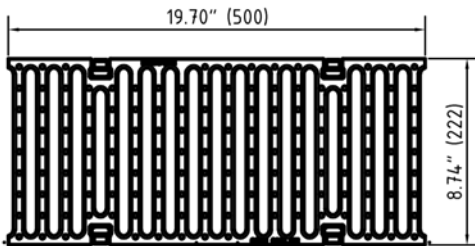
TS\_FC\_NW200\_GRATE\_DI\_SLOT\_LOAD E



## TECHNICAL SPECIFICATION

### NDS-FILCOTEN 8 INCH DUCTILE IRON GRATE

17020105



PART NUMBER	SIZE	SLOT WIDTH	LOAD CL DIN	INLET AREA / METER		WEIGHT	ADA	HEEL PROOF
				FLOW RATE W/ 1/2" HEAD				
17020105	8.7 x 19.7 in (222 x 500 mm)	0.55 x 7.871 in (14 x 200 mm)	E 600 kN	150 in <sup>2</sup> /m (965 cm <sup>2</sup> /m)	459.5 gpm/m [1.02 cfs/m] (29 LPS/m)	18.96 lbs (8.6 kg)	NO	NO

#### **SPECIFICATION:**

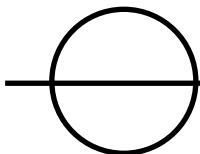
EXTRA HEAVY DUTY, (LOAD CLASS E 600 KN), DUCTILE IRON, REINFORCED GRATE IS 8.74" (222MM) WIDE, 19.70" (500MM) LONG, 0.78" (20MM) HIGH, WEIGHING 18.96 LBS (8.6 KG). THE GRATE HAS 0.55" (14MM) WIDE BY 7.87" (200MM) LONG SLOTS.

DIN CLASS E 600 KN LOAD RATED- 134,800 LBS. FOR COMMERCIAL SOLID TIRE TRAFFIC PATTERNS, AND IMPACTS FROM STEEL STRUTS OR METAL WHEELS (FORKLIFTS). DUCTILE IRON MANUFACTURED AND TESTED IN ACCORDANCE TO EN1433

EACH HALF METER GRATE IS SECURED TO THE BODY WITH FOUR POINT SNAP-IN LOCKING SYSTEM. OPTIONAL ANTI-VANDAL CLIP MAY BE SPECIFIED TO PREVENT THEFT. EN1433 CE CERTIFIED.

USE WITH FILCOTEN NW200 8 INCH CHANNEL BODY—USE 2 GRATES PER METER

**FILCOTEN**<sup>®</sup>  
a brand of BG



## FILCOTEN NW200 SLOTTED BAR GRATE

8 INCH / DUCTILE IRON / DIN CLASS E 600 KN

FOR PRODUCT ASSISTANCE, CONTACT NDS TECHNICAL SERVICE AT [techservice@ndspro.com](mailto:techservice@ndspro.com)  
851 N. HARVARD AVE. LINDSAY, CA 93247 WWW.NDSPRO.COM 1-800-726-1994, OPTION '3'