

## 04 Landscape Solutions

NDS Permeable Pavers provide an alternative solution to traditional paving methods by creating a strong grass or gravel surface that can support heavy loads. They maintain permeable surface areas, eliminating or reducing water

runoff. Tree sustainability solutions protect sidewalks, driveways, and walls of buildings from damage arising from tree roots.



# Categories & Key Products



## Permeable Pavers

---

### Cost-effective alternative solution to traditional paving methods

- Easy installation due to roll design
- High compressive strength
- Recyclable material
- Reduced maintenance

[Page 88](#)



## Tree Sustainability Solutions

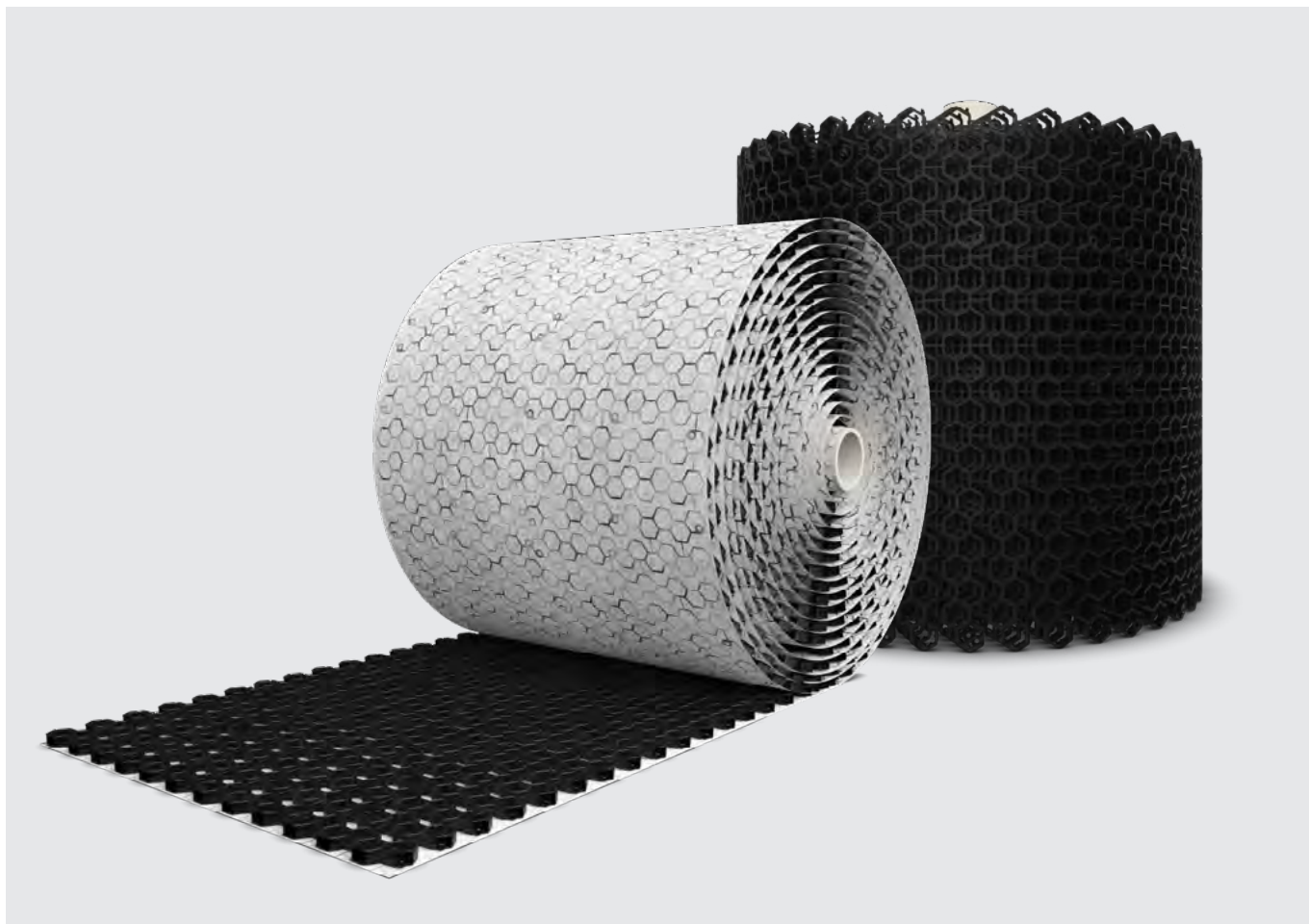
---

### Protects homeowners from high cost of repairs

- Easy installation
- Variety of solutions
- Recyclable material
- UV protection

[Page 92](#)

# EZ Roll™ Grass Paver and Gravel Paver



**Cut your installation time to a minimum by simply rolling out the product!**



- ✓ Easy installation – EZ Roll™ products come in large rolls that are easy to lay and clip together
- ✓ High performance – UV inhibitors in the polymer prevent breakdown in paver strength
- ✓ High strength – heavy, above average, load capacity
- ✓ Environmentally friendly – EZ Roll™ prevents soil compaction that inhibits healthy root growth
- ✓ Enhanced aesthetics – Pavers blend into the environment, minimizing water runoff and soil erosion
- ✓ Reduced maintenance – less expensive to maintain over time

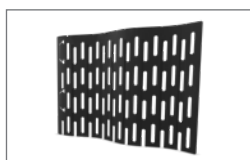
Love what you see? Here are some more products you may like.



NDS PC Dripline  
[Page 58](#)

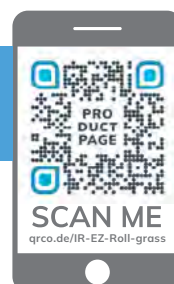


EZ Marker™ Parking  
Delineator [Page 90](#)



Trunk Protector™  
[Page 93](#)

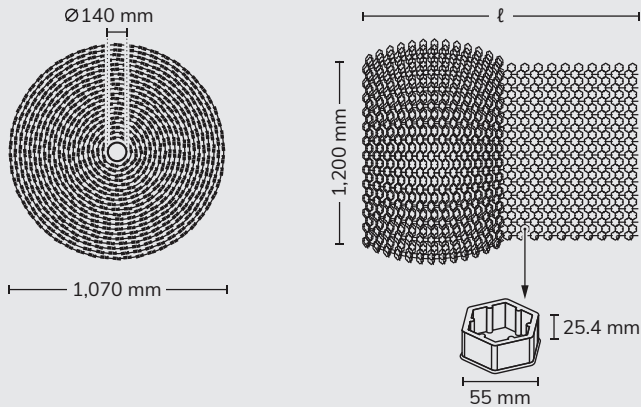
**DISCOVER  
MORE!**





## Technical Information

### EZ Roll™ Pavers



Note: Different lengths – please refer to the tables

### Applications

A turf-reinforcing, load-transferring paving system designed for:

- Golf cart paths
- Garage entrances
- Overflow parking areas
- Roadway shoulders
- Emergency vehicle access roads

### Material

100% recycled HDPE plastic (50% pre-consumer, 50% post-consumer). HDPE is rugged, flexible and ideally suited for outdoor exposure and longevity.

### Compressive strength

- Grass Pavers have a compressive strength of 24 kg / cm<sup>2</sup> in an empty condition and more than 181 kg / cm<sup>2</sup> when filled with native topsoil.
- Gravel Pavers have a compressive strength of 24 kg / cm<sup>2</sup> in an empty condition and more than 226 kg / cm<sup>2</sup> when filled.

## Installation Guideline



### Roll it out

Manufactured in pre-assembled rolls for fast and easy installation on prepared base.



### Clip it together

Lateral snap-lock system allows rolls to be connected without special tools.



### Fill it

- Top with sod or seed per local standards.
- Use clean gravel that is uniform in size, 1 cm angular stones work best.

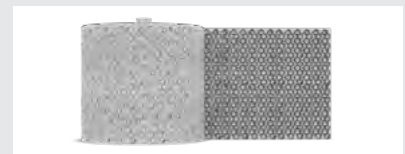
## Landscape Solutions – Permeable Pavers

### EZ ROLL™ GRASS PAVERS



EMEA part number	USA reference	Color	Size (m)	Area (m²)	Pallet quantity (pcs)
			W × L		
08006340004	EZ4X24	Black	1.2 × 7.3	8.7	6
08006340014	EZ4X110	Black	1.2 × 33.5	40.2	1

### EZ ROLL™ GRAVEL PAVERS & STAKES



EMEA part number	USA reference	Color	Size (m)	Area (m²)	Pallet quantity (pcs)
			W × L		
08006340015	GP4X110	Black	1.2 × 33.5	40.2	1
08006340009	GP4X150G	Grey	1.2 × 45.4	53.6	1
08006340012	GPSTAKE	Raw Steel			40

### TUFFTRACK™ GRASS PAVER



EMEA part number	USA reference	Color	Size (m)	Area (m²)	Pallet quantity (pcs)
			W × L		
08006340013	TT-24	Black	60 × 60	0.36	132

### EZ MARKER™ PARKING DELINEATORS



EMEA part number	USA reference	Color	Packaging (Units)
			Box Qty.
08006340005	EZMARKER	White	100
08006340006	EZMARKER-B	Blue	100
08006340007	EZMARKER-Y	Yellow	100





## Tree Sustainability Solutions

Tree sustainability solutions include root barrier systems which help in directing the roots from shrubs and trees to grow downwards. This dramatically decreases the

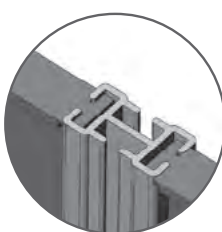
roots' potential to damage sidewalks, driveways, building foundations, etc.

### Modular EP Series Root Barrier Panels

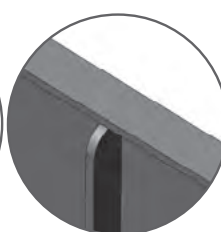
- ✓ Panels with a 10 mm wide "T" top edge and an external ground anchoring base flange 3 mm width
- ✓ Each barrier is a minimum of 2.3 mm thick and is made of up to 50% post-consumer High Impact Polypropylene (HIPP) with UV inhibitors to ensure longevity
- ✓ Barrier Panels with 13 mm raised vertical ribs running perpendicular to the panel and that are 15 mm on center
- ✓ Factory installed independent joiner strips



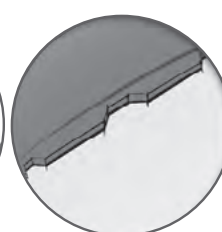
Quad Clip™



Joiner Strips



Reinforcing Ribs



Anchor Lock™

### Root Barrier Roll

- ✓ Easy and fast to install rolls
- ✓ Manufactured from up to 50% recycled HDPE with UV inhibitors and a thickness of 1–1.5 mm
- ✓ Vertically integrated and flared moulded 90° root deflecting ribs that protrude 13 mm from the wall and are placed 15–20 cm apart
- ✓ Root impervious moulded end that provides easy assembly using staples or a sealant designed to bind to HDPE (dual sided solvent based tape)





## Landscape Solutions – Root Barriers &amp; Trunk Protector

## MODULAR ROOT BARRIER PANELS



EMEA part number	USA reference	Color	Size (cm)	Packaging (Units)
			W × L	Box Qty.
08006310001	EP-1250	Black	30 × 60	25
08006310002	EP-1850	Black	45 × 60	25
08006310003	EP-2450	Black	60 × 60	25
08006310004	EP-3650	Black	90 × 60	25

## ROOT BARRIER ROLLS



EMEA part number	USA reference	Color	Size (m)	Packaging (Units)
			W × L	Box Qty.
08006310005	SM-1220	Black	0.30 × 6	1
08006310006	SM-1820	Black	0.45 × 6	1
08006310007	SM-2420	Black	0.6 × 6	1
08006310008	SM-3620	Black	0.9 × 6	1

Cover your valuable trees to avoid damage it when cutting the grass or doing other repair actions in your garden

## TRUNK PROTECTOR



EMEA part number	USA reference	Color	Size (cm)	Packaging (Units)
			W × L	Box Qty.
08006310009	TP-128	Grey	20 × 30	50



